

For Research Use Only

# CoraLite® Plus 647-conjugated CD31 Recombinant monoclonal antibody

Catalog Number:CL647-80530



## Basic Information

<b>Catalog Number:</b> CL647-80530	<b>GenBank Accession Number:</b> BC022512	<b>Purification Method:</b> Protein A purification
<b>Size:</b> 100ul , Concentration: 1000 ug/ml by Nanodrop;	<b>GeneID (NCBI):</b> 5175	<b>CloneNo.:</b> 4N13
<b>Source:</b> Rabbit	<b>ENSEMBL Gene ID:</b> ENSG00000261371	<b>Recommended Dilutions:</b> IF/ICC: 1:50-1:500
<b>Isotype:</b> IgG	<b>UNIPROT ID:</b> P16284	<b>Excitation/Emission maxima wavelengths:</b> 654 nm / 674 nm
<b>Immunogen Catalog Number:</b> AG1787	<b>Full Name:</b> platelet/endothelial cell adhesion molecule	
	<b>Calculated MW:</b> 83 kDa	
	<b>Observed MW:</b> 130 kDa	

## Applications

<b>Tested Applications:</b> IF/ICC	<b>Positive Controls:</b> IF/ICC : HUVEC cells,
<b>Species Specificity:</b> human	

## Background Information

Platelet endothelial cell adhesion molecule-1 (PECAM-1, CD31) is a member of the immunoglobulin gene superfamily of cell adhesion molecules. CD31 is a transmembrane glycoprotein that is highly expressed on the surface of the endothelium, making up a large portion of its intracellular junctions. PECAM-1 is also present on the surface of hematopoietic cells and immune cells including platelets, monocytes, neutrophils, natural killer cells, megakaryocytes and some types of T-cell (PMID: 9011572). As well as its role in cell-cell adhesion, PECAM-1 functions as a signaling receptor, and is involved in important physiological events such as nitric oxide production, regulation of T-cell immunity and tolerance, leukocyte transendothelial migration and inflammation and angiogenesis (PMID: 21183735; 20978210; 17872453; 20634489).

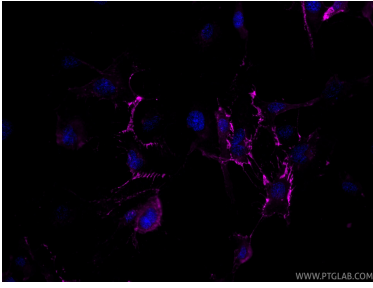
## Storage

**Storage:**  
Store at -20°C. Avoid exposure to light. Stable for one year after shipment.  
**Storage Buffer:**  
PBS with 50% glycerol, 0.05% Proclin300, 0.5% BSA, pH7.3  
**Aliquoting is unnecessary for -20°C storage**

For technical support and original validation data for this product please contact:  
T: 1 (888) 4PTGLAB (1-888-478-4522) (toll free in USA), or 1(312) 455-8498 (outside USA)  
E: proteintech@ptglab.com  
W: ptglab.com

**This product is exclusively available under Proteintech Group brand and is not available to purchase from any other manufacturer.**

## Selected Validation Data



Immunofluorescent analysis of (-20°C Ethanol) fixed HUVEC cells using Coralite® Plus 647 CD31 antibody (CL647-80530, Clone: 4N13 ) at dilution of 1:200.