

For Research Use Only

# CoraLite® Plus 647-conjugated Phospho-MEK1 (Thr386) Recombinant antibody

Catalog Number: CL647-81304

Featured Product



## Basic Information

Catalog Number:

CL647-81304

Size:

100ul , Concentration: 1000 ug/ml by Nanodrop;

Source:

Rabbit

Isotype:

IgG

GenBank Accession Number:

BC139729

GeneID (NCBI):

5604

ENSEMBL Gene ID:

ENSG00000169032

UNIPROT ID:

Q02750

Full Name:

mitogen-activated protein kinase kinase 1

Calculated MW:

43 kDa

Observed MW:

40-50 kDa

Purification Method:

Protein A purification

CloneNo.:

6K5

Excitation/Emission maxima wavelengths:

654 nm / 674 nm

## Applications

Tested Applications:

FC (Intra)

Species Specificity:

human

## Background Information

MAP2K1 encodes MAPK1, also known as MEK1. MEK1 variants can enhance MEK1 expression and ERK1 phosphorylation that together lead to continuous activation of MEK/ERK signaling pathway. MEK1 bind directly to ERK2 through a region in the N terminus of MEK. In addition, a proline-rich (PR) regulatory sequence in MEK is also involved in MEK-ERK association and signal propagation. The coupling between MEK1 and ERK2 is enhanced through phosphorylation on S298 in the MEK1 PR region, whereas phosphorylation on MEK1 T292 releases the complex. MEK1 T292 is a substrate of ERK2, but the site is also phosphorylated at a basal level when ERK2 is inhibited, suggesting several regulators of this site. Although the S298 site in MEK2 has been conserved, it lacks the T292 phosphorylation site, and it is not a substrate of PAK1. (PMID: 31972311, PMID: 17928366, PMID: 22177953)

## Storage

Storage:

Store at -20°C. Avoid exposure to light. Stable for one year after shipment.

Storage Buffer:

PBS with 50% glycerol, 0.05% Proclin300, 0.5% BSA, pH7.3

Aliquoting is unnecessary for -20°C storage

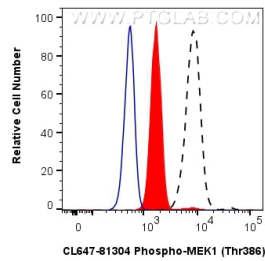
For technical support and original validation data for this product please contact:

T: 1 (888) 4PTGLAB (1-888-478-4522) (toll free in USA), or 1(312) 455-8498 (outside USA)

E: [proteintech@ptglab.com](mailto:proteintech@ptglab.com)  
W: [ptglab.com](http://ptglab.com)

This product is exclusively available under Proteintech Group brand and is not available to purchase from any other manufacturer.

## Selected Validation Data



1X10<sup>6</sup> HeLa cells untreated (dashed lines) or treated with λ phosphatase which intracellularly stained with 0.25 ug Coralite® Plus 647 Phospho-Mek1 (Thr386) Recombinant Antibody (CL647-81304, Clone:6K5)(red), or 0.25 ug Coralite® Plus 647 Rabbit IgG Isotype Control RecAb (CL647-98136, Clone: 240953C9) (blue). Cells were fixed with 4% PFA and permeabilized with 90% MeOH.