

For Research Use Only

CoraLite® Plus 647-conjugated IBA1 Recombinant antibody



Catalog Number:CL647-81728

Basic Information

Catalog Number: CL647-81728	GenBank Accession Number: BC009474	Purification Method: Protein A purification
Size: 100ul , Concentration: 1000 µg/ml by Nanodrop;	GeneID (NCBI): 199	CloneNo.: 4D5
Source: Rabbit	Full Name: allograft inflammatory factor 1	Recommended Dilutions: IF 1:50-1:500
Isotype: IgG	Calculated MW: 17 kDa	Excitation/Emission maxima wavelengths: 654 nm / 674 nm
Immunogen Catalog Number: AG1363	Observed MW: 17 kDa	

Applications

Tested Applications: FC (Intra), IF	Positive Controls: IF : rat brain tissue,
Species Specificity: Human, mouse, rat	

Background Information

IBA1 is a 143 amino acid cytoplasmic, inflammation response scaffold protein. It is constitutively expressed in monocytes and macrophages and is known to be involved in macrophage activation. It is a marker of activated macrophage. Expression of IBA1 is up-regulated in activated microglia following facial nerve axotomy, ischemia, and several brain diseases, thereby implicating it in the activated phenotypes of microglia.

Storage

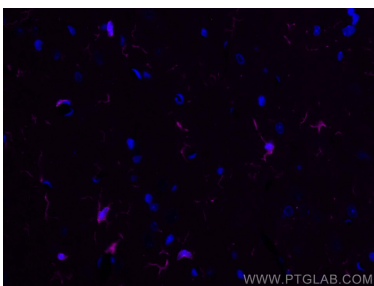
Storage:
Store at -20°C. Avoid exposure to light. Stable for one year after shipment.
Storage Buffer:
PBS with 50% Glycerol, 0.05% Proclin300, 0.5% BSA, pH 7.3.
Aliquoting is unnecessary for -20°C storage

*** 20ul sizes contain 0.1% BSA

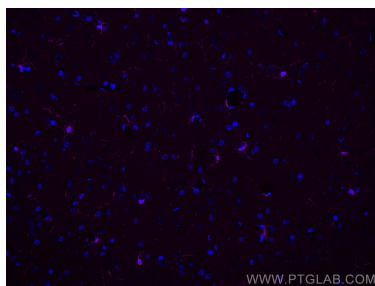
For technical support and original validation data for this product please contact:
T: 1 (888) 4PTGLAB (1-888-478-4522) (toll free in USA), or 1(312) 455-8498 (outside USA) E: proteintech@ptglab.com W: ptglab.com

This product is exclusively available under Proteintech Group brand and is not available to purchase from any other manufacturer.

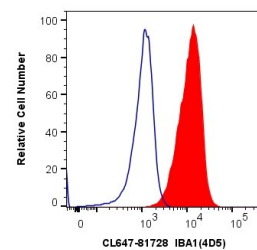
Selected Validation Data



Immunofluorescent analysis of (4% PFA) fixed rat brain tissue using CoraLite® Plus 647 IBA1 antibody (CL647-81728, Clone: 4D5) at dilution of 1:200.



Immunofluorescent analysis of (4% PFA) fixed rat brain tissue using CoraLite® Plus 647 IBA1 antibody (CL647-81728, Clone: 4D5) at dilution of 1:200.



1×10^6 THP-1 cells were intracellularly stained with 0.8 μ g CoraLite® Plus 647 Anti-Human IBA1 (CL647-81728, Clone:4D5) (red), or 0.8 μ g Isotype Control. Cells were fixed with 4% PFA and permeabilized with Flow Cytometry Perm Buffer (PF00011-C).