

For Research Use Only

CoraLite® Plus 647-conjugated Calnexin Recombinant antibody

Catalog Number:CL647-81938



Basic Information

Catalog Number:

CL647-81938

Size:

100ul , Concentration: 1000 ug/ml by Nanodrop;

Source:

Rabbit

Isotype:

IgG

Immunogen Catalog Number:

AG0697

GenBank Accession Number:

BC003552

GeneID (NCBI):

821

UNIPROT ID:

P27824

Full Name:

calnexin

Calculated MW:

90 kDa

Observed MW:

90 kDa

Purification Method:

Protein A purification

CloneNo.:

3K18

Recommended Dilutions:

IF/ICC: 1:50-1:500

Excitation/Emission maxima wavelengths:

654 nm / 674 nm

Applications

Tested Applications:

IF/ICC

Species Specificity:

human, mouse, rat

Positive Controls:

IF/ICC : HepG2 cells,

Background Information

Calnexin is a molecular chaperone that resides in the endoplasmic reticulum (ER) and participates in the folding and assembly of newly synthesized proteins. Calnexin is highly abundant in ER and is frequently used as an ER marker.

Storage

Storage:

Store at -20°C. Avoid exposure to light. Stable for one year after shipment.

Storage Buffer:

PBS with 50% glycerol, 0.05% Proclin300, 0.5% BSA, pH7.3

Aliquoting is unnecessary for -20°C storage

For technical support and original validation data for this product please contact:

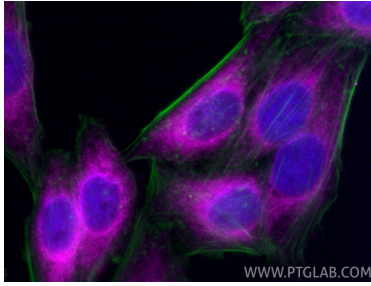
T: 1 (888) 4PTGLAB (1-888-478-4522) (toll free in USA), or 1(312) 455-8498 (outside USA)

E: proteintech@ptglab.com

W: ptglab.com

This product is exclusively available under Proteintech Group brand and is not available to purchase from any other manufacturer.

Selected Validation Data



Immunofluorescent analysis of (4% PFA) fixed HepG2 cells using CoraLite® Plus 647 Calnexin antibody (CL647-81938, Clone: 3K18) at dilution of 1:200, CL488-phalloidin (green).