

For Research Use Only

CoraLite® Plus 647-conjugated SREBF2 Recombinant monoclonal antibody

Catalog Number:CL647-83403



Basic Information

Catalog Number: CL647-83403	GenBank Accession Number: BC056158	Purification Method: Protein A purification
Size: 100ul , Concentration: 1000 ug/ml by Nanodrop;	GeneID (NCBI): 6721	CloneNo.: 240451A12
Source: Rabbit	UNIPROT ID: Q12772	Recommended Dilutions: IF/ICC: 1:50-1:500
Isotype: IgG	Full Name: sterol regulatory element binding transcription factor 2	Excitation/Emission maxima wavelengths: 654 nm / 674 nm
Immunogen Catalog Number: AG28205	Calculated MW: 124 kDa	

Applications

Tested Applications: IF/ICC	Positive Controls: IF/ICC : HeLa cells,
Species Specificity: human	

Background Information

SREBF2, also named as BHLHD2, is a 1141 amino acid protein, which contains 1 bHLH domain and belongs to the SREBP family. SREBF2 localizes in the endoplasmic reticulum membrane and is ubiquitously expressed in adult and fetal tissues. SREBF2 as a transcriptional activator is required for lipid homeostasis.

Storage

Storage:
Store at -20°C. Avoid exposure to light. Stable for one year after shipment.
Storage Buffer:
PBS with 50% glycerol, 0.05% Proclin300, 0.5% BSA, pH7.3
Aliquoting is unnecessary for -20°C storage

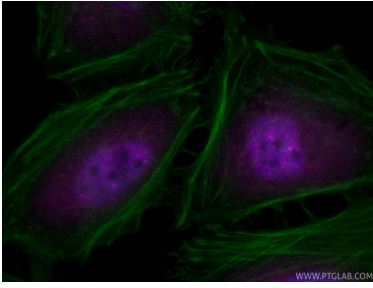
For technical support and original validation data for this product please contact:

T: 1 (888) 4PTGLAB (1-888-478-4522) (toll free
in USA), or 1(312) 455-8498 (outside USA)

E: proteintech@ptglab.com
W: ptglab.com

**This product is exclusively available under Proteintech
Group brand and is not available to purchase from any
other manufacturer.**

Selected Validation Data



Immunofluorescent analysis of (4% PFA) fixed HeLa cells using CoraLite® Plus 647 SREBF2 antibody (CL647-83403, Clone: 240451A12) at dilution of 1:200, CL488-phalloidin (green).