

For Research Use Only

# CoraLite® Plus 647-conjugated Syntaxin 6 Recombinant antibody

Catalog Number:CL647-84627-5



## Basic Information

### Catalog Number:

CL647-84627-5

### GenBank Accession Number:

BC009944

### Purification Method:

Protein A purification

### Size:

100ul , Concentration: 1000 ug/ml by Nanodrop;

### GeneID (NCBI):

10228

### CloneNo.:

242100A9

### Source:

Rabbit

### UNIPROT ID:

O43752

### Recommended Dilutions:

IF/ICC 1:50-1:500

### Isotype:

IgG

### Full Name:

syntaxin 6

### Excitation/Emission maxima wavelengths:

654 nm / 674 nm

### Immunogen Catalog Number:

AG1284

### Calculated MW:

29 kDa

### Observed MW:

32 kDa

## Applications

### Tested Applications:

IF/ICC

### Positive Controls:

IF/ICC : PC-12 cells,

### Species Specificity:

human, mouse, rat

## Background Information

Syntaxin-6 (STX6) is a SNARE protein located in the trans-Golgi network (TGN) and endosomes. It associates with a variety of SNARE proteins and is involved in intracellular vesicle trafficking. STX6 is required for sorting proteins from endosomes toward either the TGN or lysosomes.

## Storage

### Storage:

Store at -20°C. Avoid exposure to light. Stable for one year after shipment.

### Storage Buffer:

PBS with 50% glycerol, 0.05% Proclin300, 0.5% BSA, pH7.3

Aliquoting is unnecessary for -20°C storage

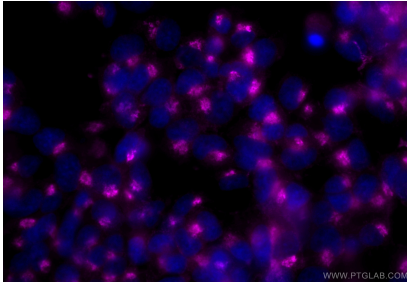
For technical support and original validation data for this product please contact:

T: 1 (888) 4PTGLAB (1-888-478-4522) (toll free in USA), or 1(312) 455-8498 (outside USA)

E: [proteintech@ptglab.com](mailto:proteintech@ptglab.com)  
W: [ptglab.com](http://ptglab.com)

This product is exclusively available under Proteintech Group brand and is not available to purchase from any other manufacturer.

## Selected Validation Data



Immunofluorescent analysis of (4% PFA) fixed PC-12 cells using Coralite® Plus 647 Syntaxin 6 antibody (CL647-84627-5, Clone: 242100A9 ) at dilution of 1:200.