

For Research Use Only

# CoraLite® Plus 647-conjugated 6\*his,His tag Recombinant antibody

Catalog Number:CL647-84814



## Basic Information

Catalog Number:

CL647-84814

GenBank Accession Number:

GeneID (NCBI):

5

Size:

100ul , Concentration: 1000 ug/ml by  
Nanodrop;

Full Name:

6\*His, His Tag

Source:

Rabbit

Calculated MW:

1 kDa

Isotype:

IgG

Purification Method:

Protein A purification

CloneNo.:

241261A7

Recommended Dilutions:

IF/ICC 1:50-1:500

Excitation/Emission maxima  
wavelengths:

654 nm / 674 nm

## Applications

Tested Applications:

IF/ICC

Species Specificity:

recombinant protein

Positive Controls:

IF/ICC : Transfected HEK-293 cells,

## Background Information

Protein tags are protein or peptide sequences located either on the C- or N- terminal of the target protein, which facilitates one or several of the following characteristics: solubility, detection, purification, localization and expression. His tag is often used for affinity purification and binding assays. Expressed His-tagged proteins can be purified and detected easily because the string of histidine residues binds to several types of immobilized metal ions, including nickel, cobalt and copper, under specific buffer conditions. The antibody reacts to the 6\*His tagged protein.

## Storage

Storage:

Store at -20°C. Avoid exposure to light. Stable for one year after shipment.

Storage Buffer:

PBS with 50% glycerol, 0.05% Proclin300, 0.5% BSA, pH7.3

Aliquoting is unnecessary for -20°C storage

For technical support and original validation data for this product please contact:

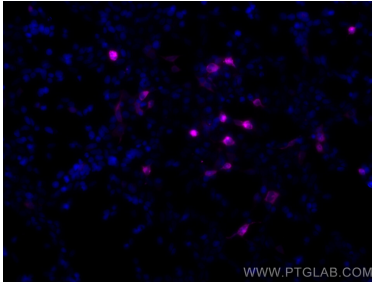
T: 1 (888) 4PTGLAB (1-888-478-4522) (toll free  
in USA), or 1(312) 455-8498 (outside USA)

E: [proteintech@ptglab.com](mailto:proteintech@ptglab.com)  
W: [ptglab.com](http://ptglab.com)

This product is exclusively available under Proteintech Group brand and is not available to purchase from any other manufacturer.

---

## Selected Validation Data



Immunofluorescent analysis of (-20°C Ethanol)  
fixed Transfected HEK-293 cells using Coralite®  
Plus 647 6\*his,His tag antibody (CL647-84814,  
Clone: 241261A7 ) at dilution of 1:200.