

For Research Use Only

# CoraLite® Plus 647-conjugated TCOF1 Recombinant antibody

Catalog Number: CL647-84914-5



## Basic Information

<b>Catalog Number:</b> CL647-84914-5	<b>GenBank Accession Number:</b> BC014559	<b>Purification Method:</b> Protein A purification
<b>Size:</b> 100ul , Concentration: 1000 ug/ml by Nanodrop;	<b>GeneID (NCBI):</b> 6949	<b>CloneNo.:</b> 242201F12
<b>Source:</b> Rabbit	<b>UNIPROT ID:</b> Q13428	<b>Recommended Dilutions:</b> IF/ICC: 1:50-1:500
<b>Isotype:</b> IgG	<b>Full Name:</b> Treacher Collins-Franceschetti syndrome 1	<b>Excitation/Emission maxima wavelengths:</b> 654 nm / 674 nm
<b>Immunogen Catalog Number:</b> AG1447	<b>Calculated MW:</b> 97 kDa, 144 kDa, 152 kDa	

## Applications

<b>Tested Applications:</b> IF/ICC	<b>Positive Controls:</b> IF/ICC : MCF-7 cells,
<b>Species Specificity:</b> human	

## Background Information

TCOF1 also known as treacle, is a nucleolar protein with a U1S1 homology domain. TCOF1 is involved in ribosomal DNA gene transcription by interacting with upstream binding factor (UBF). Mutations in TCOF1 have been associated with Treacher Collins syndrome, a disorder which includes abnormal craniofacial development(PMID: 31218872)

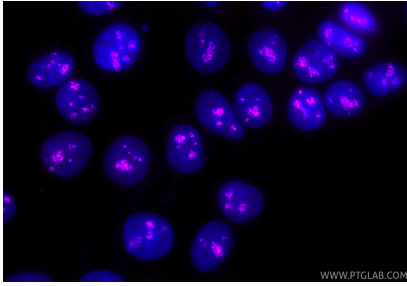
## Storage

**Storage:**  
Store at -20°C. Avoid exposure to light. Stable for one year after shipment.  
**Storage Buffer:**  
PBS with 50% glycerol, 0.05% Proclin300, 0.5% BSA, pH7.3  
**Aliquoting is unnecessary for -20°C storage**

For technical support and original validation data for this product please contact:  
T: 1 (888) 4PTGLAB (1-888-478-4522) (toll free in USA), or 1(312) 455-8498 (outside USA)  
E: [proteintech@ptglab.com](mailto:proteintech@ptglab.com)  
W: [ptglab.com](http://ptglab.com)

This product is exclusively available under Proteintech Group brand and is not available to purchase from any other manufacturer.

## Selected Validation Data



Immunofluorescent analysis of (4% PFA) fixed MCF-7 cells using CoraLite® Plus 647 TCOF1 antibody (CL647-84914-5, Clone: 242201F12 ) at dilution of 1:200.