

For Research Use Only

# CoraLite® Plus 647-conjugated SEC31A Recombinant antibody

Catalog Number: CL647-84942-4



## Basic Information

<b>Catalog Number:</b> CL647-84942-4	<b>GenBank Accession Number:</b> BC084583	<b>Purification Method:</b> Protein A purification
<b>Size:</b> 100ul , Concentration: 1000 ug/ml by Nanodrop;	<b>GeneID (NCBI):</b> 22872	<b>CloneNo.:</b> 242531E2
<b>Source:</b> Rabbit	<b>UNIPROT ID:</b> O94979	<b>Recommended Dilutions:</b> IF/ICC: 1:50-1:500
<b>Isotype:</b> IgG	<b>Full Name:</b> SEC31 homolog A (S. cerevisiae)	<b>Excitation/Emission maxima wavelengths:</b> 654 nm / 674 nm
<b>Immunogen Catalog Number:</b> AG12314	<b>Calculated MW:</b> 1220 aa, 133 kDa	
	<b>Observed MW:</b> 118-140 kDa	

## Applications

<b>Tested Applications:</b> IF/ICC	<b>Positive Controls:</b> IF/ICC : HeLa cells,
<b>Species Specificity:</b> human	

## Background Information

COPII-coated vesicles mediate anterograde transport from the ER to the Golgi apparatus. COPII is composed of three parts: two coat protein complexes (Sec23/24 complex and Sec13/31 complex) and one small GTP-binding protein, Sar1 (PMID: 9568718). The sec31 subunit of the coat complex has been shown to be essential for vesicle formation and ER-Golgi transport (PMID: 10788476). Two mammalian homologs of yeast sec31p, Sec31A and Sec31B, share about 40% amino acid identity. Sec31A transcripts are ubiquitously and abundantly expressed.

## Storage

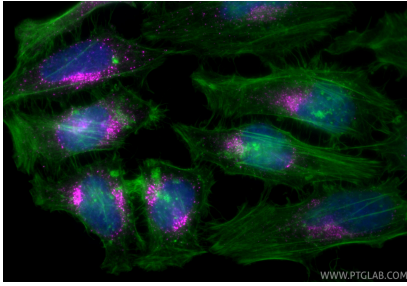
**Storage:**  
Store at -20°C. Avoid exposure to light. Stable for one year after shipment.  
**Storage Buffer:**  
PBS with 50% glycerol, 0.05% Proclin300, 0.5% BSA, pH7.3  
Aliquoting is unnecessary for -20°C storage

For technical support and original validation data for this product please contact:  
T: 1 (888) 4PTGLAB (1-888-478-4522) (toll free in USA), or 1(312) 455-8498 (outside USA)  
E: proteintech@ptglab.com  
W: ptglab.com

This product is exclusively available under Proteintech Group brand and is not available to purchase from any other manufacturer.

---

## Selected Validation Data



Immunofluorescent analysis of (4% PFA) fixed HeLa cells using CoraLite® Plus 647 SEC31A antibody (CL647-84942-4, Clone: 242531E2 ) at dilution of 1:200, CL488-Phalloidin (green).