

For Research Use Only

CoraLite® Plus 647-conjugated RECQL Recombinant antibody

Catalog Number: CL647-85024-6



Basic Information

Catalog Number: CL647-85024-6	GenBank Accession Number: BC001052	Purification Method: Protein A purification
Size: 100ul , Concentration: 1000 ug/ml by Nanodrop;	GeneID (NCBI): 5965	CloneNo.: 242577F1
Source: Rabbit	UNIPROT ID: P46063	Recommended Dilutions: IF/ICC: 1:50-1:500
Isotype: IgG	Full Name: RecQ protein-like (DNA helicase Q1-like)	Excitation/Emission maxima wavelengths: 654 nm / 674 nm
Immunogen Catalog Number: AG6834	Calculated MW: 73 kDa	

Applications

Tested Applications: IF/ICC	Positive Controls: IF/ICC : HeLa cells,
Species Specificity: human	

Background Information

RECQL, also known as RecQ-like helicase, is a member of the RecQ DNA helicase family. These enzymes play a crucial role in maintaining genomic integrity by participating in various DNA repair processes, including mismatch repair, nucleotide excision repair, and direct repair. It's reported that the low RECQL expression is strongly associated with poor prognosis in breast cancer. RECQL expression may be a useful marker in estimating the prognosis of breast cancer patients. (PMID: 29914420)

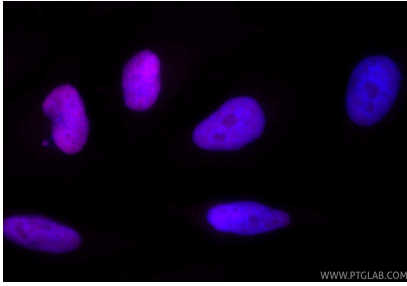
Storage

Storage:
Store at -20°C. Avoid exposure to light. Stable for one year after shipment.
Storage Buffer:
PBS with 50% glycerol, 0.05% Proclin300, 0.5% BSA, pH7.3
Aliquoting is unnecessary for -20°C storage

For technical support and original validation data for this product please contact:
T: 1 (888) 4PTGLAB (1-888-478-4522) (toll free in USA), or 1(312) 455-8498 (outside USA)
E: proteintech@ptglab.com
W: ptglab.com

This product is exclusively available under Proteintech Group brand and is not available to purchase from any other manufacturer.

Selected Validation Data



Immunofluorescent analysis of (4% PFA) fixed HeLa cells using CoraLite® Plus 647 RECQL antibody (CL647-85024-6, Clone: 242577F1) at dilution of 1:200.