

For Research Use Only

CoraLite® Plus 647-conjugated PDLIM1/CLP36 Recombinant antibody

Catalog Number:CL647-85027-5



Basic Information

Catalog Number:

CL647-85027-5

Size:

100ul , Concentration: 1000 ug/ml by
Nanodrop;

Source:

Rabbit

Isotype:

IgG

Immunogen Catalog Number:

AG2274

GenBank Accession Number:

BC000915

GeneID (NCBI):

9124

UNIPROT ID:

O00151

Full Name:

PDZ and LIM domain 1

Calculated MW:

329 aa, 36 kDa

Observed MW:

36 kDa

Purification Method:

Protein A purification

CloneNo.:

242585C7

Recommended Dilutions:

IF/ICC: 1:50-1:500

Excitation/Emission maxima wavelengths:

654 nm / 674 nm

Applications

Tested Applications:

IF/ICC

Species Specificity:

human, mouse, rat

Positive Controls:

IF/ICC : HeLa cells,

Background Information

PDLIM1, also named as CLIM1, CLP-36, CLP36, hCLIM1 and Elfin, is a member of the actinin-associated LIM protein (ALP)/enigma protein family, plays a role in neurite outgrowth in the peripheral nervous system. It is a cytoskeletal protein that may act as an adapter that brings other proteins (like kinases) to the cytoskeleton. PDLIM1 and PALLD formed a complex in the dorsal root ganglion (DRG) and PDLIM1 and PALLD were colocalized in the neurites and cell bodies of primary DRG neurons. PDLIM1 may interact with PALLD to influence neurite outgrowth during sciatic nerve regeneration. (PMID: 20381583)

Storage

Storage:

Store at -20°C. Avoid exposure to light. Stable for one year after shipment.

Storage Buffer:

PBS with 50% glycerol, 0.05% Proclin300, 0.5% BSA, pH7.3

Aliquoting is unnecessary for -20°C storage

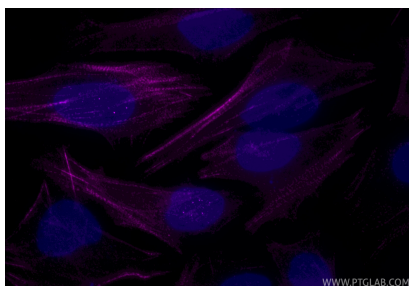
For technical support and original validation data for this product please contact:

T: 1 (888) 4PTGLAB (1-888-478-4522) (toll free
in USA), or 1(312) 455-8498 (outside USA)

E: proteintech@ptglab.com
W: ptglab.com

This product is exclusively available under Proteintech Group brand and is not available to purchase from any other manufacturer.

Selected Validation Data



Immunofluorescent analysis of (4% PFA) fixed HeLa cells using Coralite® Plus 647 PDLIM1/CLP36 antibody (CL647-85027-5, Clone: 242585C7) at dilution of 1:200.