

For Research Use Only

# CoraLite® Plus 647-conjugated DCP1A Recombinant monoclonal antibody

Catalog Number: CL647-85047-5



## Basic Information

### Catalog Number:

CL647-85047-5

### Size:

100ul , Concentration: 1000 ug/ml by  
Nanodrop;

### Source:

Rabbit

### Isotype:

IgG

### Immunogen Catalog Number:

AG18027

### GenBank Accession Number:

BC007439

### GeneID (NCBI):

55802

### UNIPROT ID:

Q9NPI6

### Full Name:

DCP1 decapping enzyme homolog A  
(S. cerevisiae)

### Calculated MW:

582 aa, 63 kDa

### Observed MW:

70-75 kDa

### Purification Method:

Protein A purification

### CloneNo.:

242553F2

### Recommended Dilutions:

IF/ICC: 1:50-1:500

### Excitation/Emission maxima

wavelengths:

654 nm / 674 nm

## Applications

### Tested Applications:

IF/ICC

### Species Specificity:

human, mouse, rat

### Positive Controls:

IF/ICC : HepG2 cells,

## Background Information

DCP1 decapping enzyme homolog A (S. cerevisiae), known as mRNA-decapping enzyme 1A (DCP1A), is necessary for the degradation of mRNAs, both in normal mRNA turnover and in nonsense-mediated mRNA decay. Removes the 7-methyl guanine cap structure from mRNA molecules, yielding a 5'-phosphorylated mRNA fragment and 7m-GDP. Contributes to the transactivation of target genes after stimulation by TGFβ1. This antibody specifically reacts with the 70kd DCP1A protein.

## Storage

### Storage:

Store at -20°C. Avoid exposure to light. Stable for one year after shipment.

### Storage Buffer:

PBS with 50% glycerol, 0.05% Proclin300, 0.5% BSA, pH7.3

Aliquoting is unnecessary for -20°C storage

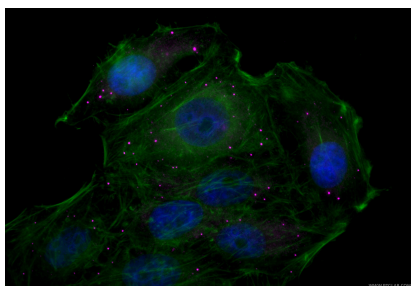
For technical support and original validation data for this product please contact:

T: 1 (888) 4PTGLAB (1-888-478-4522) (toll free  
in USA), or 1(312) 455-8498 (outside USA)

E: [proteintech@ptglab.com](mailto:proteintech@ptglab.com)  
W: [ptglab.com](http://ptglab.com)

This product is exclusively available under Proteintech Group brand and is not available to purchase from any other manufacturer.

## Selected Validation Data



Immunofluorescent analysis of (4% PFA) fixed HepG2 cells using CoraLite® Plus 647 DCP1A antibody (CL647-85047-5, Clone: 242553F2 ) at dilution of 1:200, CL488-phalloidin (green).