

For Research Use Only

CoraLite® Plus 647-conjugated FOXG1 Recombinant monoclonal antibody

Catalog Number:CL647-85930



Basic Information

Catalog Number:

CL647-85930

Size:

100ul , Concentration: 1000 ug/ml by

Nanodrop;

Source:

Rabbit

Isotype:

IgG

Immunogen Catalog Number:

AG17169

GenBank Accession Number:

BC035020

GeneID (NCBI):

2290

UNIPROT ID:

P55316

Full Name:

forkhead box G1

Calculated MW:

489 aa, 52 kDa

Observed MW:

60 kDa

Purification Method:

Protein A purification

CloneNo.:

250144E8

Recommended Dilutions:

IF/ICC: 1:50-1:500

Excitation/Emission maxima
wavelengths:

654 nm / 674 nm

Applications

Tested Applications:

IF/ICC

Species Specificity:

human, mouse, rat

Positive Controls:

IF/ICC : U-251 cells, C6 cells

Background Information

Forkhead Box G1 (FOXG1) is a member of the Forkhead family of genes with non-redundant roles in brain development, where alteration of this gene's expression significantly affects the formation and function of the mammalian cerebral cortex. FOXG1 haploinsufficiency in humans is associated with prominent differences in brain size and impaired intellectual development noticeable in early childhood, while homozygous mutations are typically fatal.

Storage

Storage:

Store at -20°C. Avoid exposure to light. Stable for one year after shipment.

Storage Buffer:

PBS with 50% glycerol, 0.05% Proclin300, 0.5% BSA, pH7.3

Aliquoting is unnecessary for -20°C storage

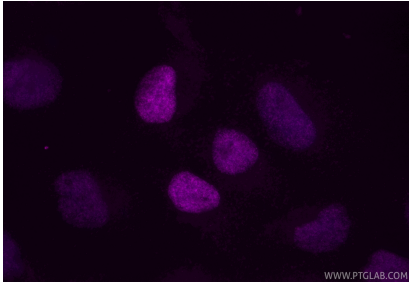
For technical support and original validation data for this product please contact:

T: 1 (888) 4PTGLAB (1-888-478-4522) (toll free
in USA), or 1(312) 455-8498 (outside USA)

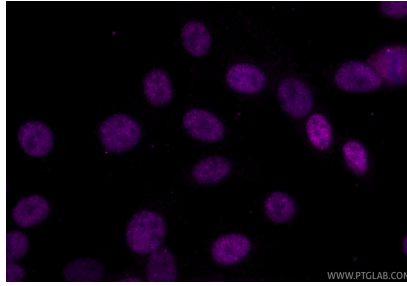
E: proteintech@ptglab.com
W: ptglab.com

This product is exclusively available under Proteintech Group brand and is not available to purchase from any other manufacturer.

Selected Validation Data



Immunofluorescent analysis of (4% PFA) fixed U-251 cells using CoraLite® Plus 647 FOXG1 antibody (CL647-85930, Clone: 250144E8) at dilution of 1:200.



Immunofluorescent analysis of (4% PFA) fixed C6 cells using CoraLite® Plus 647 FOXG1 antibody (CL647-85930, Clone: 250144E8) at dilution of 1:200.