

For Research Use Only

# CoraLite® Plus 647-conjugated CD107b / LAMP2 Recombinant monoclonal antibody

Catalog Number: CL647-86269-3



## Basic Information

<b>Catalog Number:</b> CL647-86269-3	<b>GenBank Accession Number:</b> NM_002294.3	<b>Purification Method:</b> Protein A purification
<b>Size:</b> 100ul , Concentration: 1000 ug/ml by Nanodrop;	<b>GeneID (NCBI):</b> 3920	<b>CloneNo.:</b> 250948D7
<b>Source:</b> Rabbit	<b>ENSEMBL Gene ID:</b> ENSG00000005893	<b>Recommended Dilutions:</b> IF/ICC: 1:50-1:500
<b>Isotype:</b> IgG	<b>UNIPROT ID:</b> P13473-1	<b>Excitation/Emission maxima wavelengths:</b> 654 nm / 674 nm
<b>Immunogen Catalog Number:</b> EG4998	<b>Full Name:</b> lysosomal-associated membrane protein 2	
	<b>Calculated MW:</b> 45 kDa	
	<b>Observed MW:</b> 100-130 kDa	

## Applications

<b>Tested Applications:</b> IF/ICC	<b>Positive Controls:</b> IF/ICC : U-251 cells,
<b>Species Specificity:</b> human	

## Background Information

LAMP2 (CD107b) is a Lysosomal membrane glycoprotein. LAMP2 is extensively glycosylated with asparagine-linked oligosaccharides which protect it from intracellular proteolysis (PMID: 10521503). Although LAMP-2 is localized primarily in the endosome-lysosomal membrane of cells, it is also found on the plasma membrane under certain circumstances, e.g., after platelet activation, during granulocytic differentiation and activation, and in some tumor cells (PMID: 12221139). LAMP is involved in lysosomal stability and autophagy (PMID: 12221139). This glycoprotein provides selectins with carbohydrate ligands. LAMP2 may play a role in tumor cell metastasis (PMID 9426697).

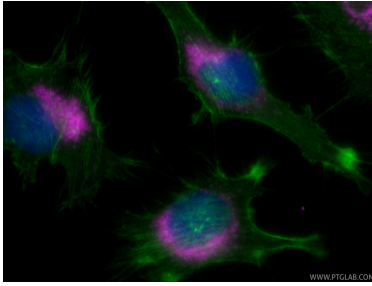
## Storage

**Storage:**  
Store at -20°C. Avoid exposure to light. Stable for one year after shipment.  
**Storage Buffer:**  
PBS with 50% glycerol, 0.05% Proclin300, 0.5% BSA, pH7.3  
**Aliquoting is unnecessary for -20°C storage**

For technical support and original validation data for this product please contact:  
T: 1 (888) 4PTGLAB (1-888-478-4522) (toll free in USA), or 1(312) 455-8498 (outside USA)  
E: proteintech@ptglab.com  
W: ptglab.com

This product is exclusively available under Proteintech Group brand and is not available to purchase from any other manufacturer.

## Selected Validation Data



Immunofluorescent analysis of (-20°C Ethanol) fixed U-251 cells using CoraLite® Plus 647 CD107b / LAMP2 antibody (CL647-86269-3, Clone: 250948D7 ) at dilution of 1:200, CL488-phalloidin (green).