

For Research Use Only



# CoraLite® Plus 647 Anti-Rat IFN-gamma Rabbit Recombinant Antibody

Catalog Number: **CL647-98001**

## Basic Information

Catalog Number: CL647-98001	GenBank Accession Number: NM_138880	Purification Method: Protein A purification
Size: 100ug , 500 µg/ml	GeneID (NCBI): 25712	CloneNo.: 6K20
Source: Rabbit	UNIPROT ID: P01581	Excitation/Emission maxima wavelengths: 654 nm / 674 nm
Isotype: IgG	Full Name: interferon gamma	
	Calculated MW: 18 kDa	

## Applications

Tested Applications:  
FC (Intra)

Species Specificity:  
Rat

## Background Information

Interferon-gamma (IFN  $\gamma$ ), is a type II interferon that provides immunity against bacterial, viral and protozoan infections. It is produced by a number of immune cell types including natural killer cells, natural killer T cells, and effector lymphocyte T cells following antigenic and inflammatory triggers. The IFN  $\gamma$  dimer binds to its cognate receptor which has two subunits: IFN- $\gamma$  R1 which is the ligand-binding chain ( $\alpha$  chain) and IFN- $\gamma$  R2, the signal-transducing chain ( $\beta$  chain). Binding to the receptor activates the JAK/STAT pathway which in turn activates IFN  $\gamma$  responsive genes. While IFN  $\gamma$  can inhibit viral replication, it also works as an immune-modulator and immune-stimulator by increasing surface expression of class I MHC proteins (PMID: 19268625; 10688427)

## Storage

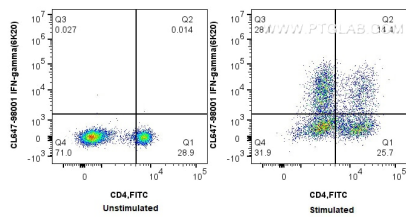
Storage:  
Store at 2-8°C. Avoid exposure to light. Stable for one year after shipment.

Storage Buffer:  
PBS with 0.09% sodium azide.

For technical support and original validation data for this product please contact:  
T: 1 (888) 4PTGLAB (1-888-478-4522) (toll free in USA), or 1(312) 455-8498 (outside USA)  
E: [proteintech@ptglab.com](mailto:proteintech@ptglab.com)  
W: [ptglab.com](http://ptglab.com)

This product is exclusively available under Proteintech Group brand and is not available to purchase from any other manufacturer.

## Selected Validation Data



1x10<sup>6</sup> unstimulated or ConA, PMA and ionomycin stimulated (in the presence of protein transport inhibitors) rat splenocytes cells were intracellularly stained with 0.25 ug CoraLite® Plus 647 Anti-Rat IFN-gamma (6K20) Rabbit Recombinant Antibody (CL647-98001, Clone:6K20), and 0.25 ug CoraLite® Plus 647-conjugated Rabbit IgG control Rabbit PolyAb (CL647-30000), and 0.25 ug FITC Plus Anti-Rat CD4 (OX-35) (FITC-65179, Clone: OX-35). Cells were fixed with 4% PFA and

