

For Research Use Only



CoraLite® Plus 647 Anti-Mouse IL-12/IL-23 p40 Rabbit Recombinant Antibody

Catalog Number: **CL647-98004**

Basic Information

Catalog Number:

CL647-98004

Size:

100ug , 500 µg/ml

Source:

Rabbit

Isotype:

IgG

GenBank Accession Number:

GeneID (NCBI):

16160

UNIPROT ID:

P43432

Full Name:

interleukin 12b

Calculated MW:

70 kDa

Purification Method:

Protein A purification

CloneNo.:

230037C9

Excitation/Emission maxima wavelengths:

654 nm / 674 nm

Applications

Tested Applications:

FC (Intra)

Species Specificity:

mouse

Background Information

IL-12 and IL-23 are heterodimeric cytokines that share a common p40 subunit (PMID: 11114383). IL-12 is composed of the IL-12 p40 subunit linked to the IL-12 p35 subunit, and the heterodimer signals through the IL-12 receptor (IL-12R), which comprises the IL-12Rβ1 and IL-12Rβ2 subunits. IL-23 is composed of the IL-23 p19 subunit and the IL-12 p40 (IL-12/23p40) subunit, which signals through IL-23R and IL-12Rβ1 (PMID: 11114383; 26121196). IL-12/IL-23 p40 also exists as a monomer and as a homodimer which can act as a potent IL-12 antagonist (PMID: 8958912; 18783467). IL-12/IL-23 p40 is produced by antigen-presenting cells, such as dendritic cells (DCs), monocytes, macrophages, neutrophils and, to a lesser extent, B cells (PMID: 20476918).

Storage

Storage:

Store at 2-8°C. Avoid exposure to light. Stable for one year after shipment.

Storage Buffer:

PBS with 0.09% sodium azide.

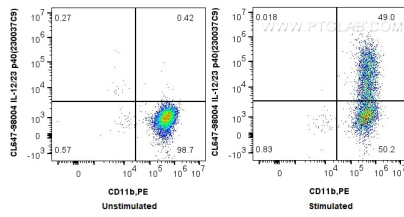
For technical support and original validation data for this product please contact:

T: 1 (888) 4PTGLAB (1-888-478-4522) (toll free in USA), or 1(312) 455-8498 (outside USA)

E: proteintech@ptglab.com
W: ptglab.com

This product is exclusively available under Proteintech Group brand and is not available to purchase from any other manufacturer.

Selected Validation Data



1x10⁶ unstimulated or IFN γ and LPS treated (in the presence of protein transport inhibitors) were intracellularly stained with 0.5 μ g CoraLite[®] Plus 647 Anti-Mouse IL-12/23 p40 (230037C9) Rabbit Recombinant Antibody (CL647-98004, Clone:230037C9), and 0.5 μ g CoraLite[®] Plus 647-conjugated Rabbit IgG control Rabbit PolyAb (CL647-30000), and 0.5 μ g PE Anti-Mouse CD11b (M1/70) (PE-65055, Clone: M1/70). Cells were fixed with 4% PFA and permeabilized with

