

For Research Use Only

CoraLite® Plus 647 Anti-Human N-cadherin/CD325 Rabbit Recombinant Antibody

Catalog Number: CL647-98006



Basic Information

Catalog Number:

CL647-98006

Size:

100 tests, 5 ul/test

Source:

Rabbit

Isotype:

IgG

Immunogen Catalog Number:

EG0701

GenBank Accession Number:

NM_001792.4

GeneID (NCBI):

1000

UNIPROT ID:

P19022-1

Full Name:

cadherin 2, type 1, N-cadherin (neuronal)

Calculated MW:

100 kDa

Purification Method:

Protein A purification

CloneNo.:

230259D7

Excitation/Emission maxima wavelengths:

654 nm / 674 nm

Applications

Tested Applications:

FC

Species Specificity:

human

Positive Controls:

FC : HeLa cells,

Background Information

Cadherins are a family of transmembrane glycoproteins that mediate calcium-dependent cell-cell adhesion and play an important role in the maintenance of normal tissue architecture. N-cadherin (neural cadherin), also known as CDH2 (cadherin 2), is a 130-kDa transmembrane protein and a classical member of the cadherin superfamily which also include E-, P-, R-, and B-cadherins. Expression of N-cadherin has been reported on various cell types including neurons, endothelial cells and cardiac myocytes (PMID: 11282032; 9508779; 8125202). N-cadherin has functions in early brain morphogenesis, synaptogenesis and synaptic plasticity (PMID: 23321619).

Storage

Storage:

Store at 2-8°C. Avoid exposure to light. Stable for one year after shipment.

Storage Buffer:

PBS with 0.09% sodium azide and 0.5% BSA, pH7.3

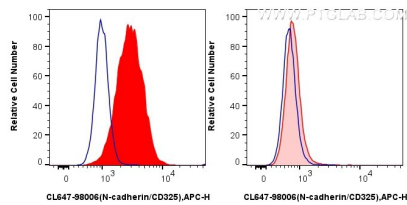
For technical support and original validation data for this product please contact:

T: 1 (888) 4PTGLAB (1-888-478-4522) (toll free in USA), or 1(312) 455-8498 (outside USA)

E: proteintech@ptglab.com
W: ptglab.com

This product is exclusively available under Proteintech Group brand and is not available to purchase from any other manufacturer.

Selected Validation Data



1x10⁶ HeLa cells (left) or MCF-7 cells (right) were stained with 5 ul CoraLite® Plus 647 Anti-Human N-cadherin/CD325 (230259D7) Rabbit RecAb (CL647-98006, Clone: 230259D7) (red) or CoraLite® Plus 647 Rabbit IgG Isotype Control RecAb (CL647-98136, Clone: 240953C9) (blue). Cells were not fixed.