

For Research Use Only

CoraLite® Plus 647 Anti-Human ICAM-1/CD54 Rabbit Recombinant Antibody

Catalog Number:CL647-98011



Basic Information

Catalog Number:

CL647-98011

Size:

100tests , 5 ul/test

Source:

Rabbit

Isotype:

IgG

GenBank Accession Number:

BC015969

GeneID (NCBI):

3383

ENSEMBL Gene ID:

ENSG00000090339

UNIPROT ID:

P05362

Full Name:

intercellular adhesion molecule 1

Calculated MW:

90 kDa

Purification Method:

Protein A purification

CloneNo.:

240646A11

Excitation/Emission maxima

wavelengths:

654 nm / 674 nm

Applications

Tested Applications:

FC

Species Specificity:

human

Background Information

ICAM-1 (CD54) is a 90-kDa transmembrane glycoprotein of the immunoglobulin superfamily and is critical for the firm attachment and transmigration of leukocytes out of blood vessels and into tissues (PMID: 19307690). ICAM-1 is expressed by several cell types, typically on endothelial cells and cells of the immune system, and its expression can be up-regulated by various stimuli, including TNF- α , INF- γ , IL-1 and thrombin (PMID: 3086451; 9694714; 15979056). It is a ligand for LFA-1 and Mac-1, serves as a receptor for rhinovirus, and is one of several receptors used by Plasmodium falciparum (PMID: 2566624; 2538244; 2475784).

Storage

Storage:

Store at 2-8°C. Avoid exposure to light. Stable for one year after shipment.

Storage Buffer:

PBS with 0.09% sodium azide and 0.5% BSA

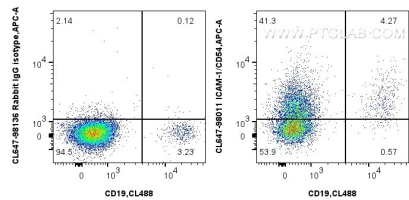
For technical support and original validation data for this product please contact:

T: 1 (888) 4PTGLAB (1-888-478-4522) (toll free in USA), or 1(312) 455-8498 (outside USA)

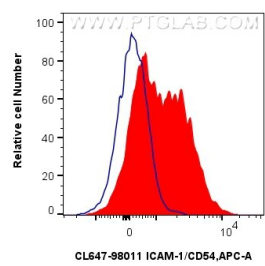
E: proteintech@ptglab.com
W: ptglab.com

This product is exclusively available under Proteintech Group brand and is not available to purchase from any other manufacturer.

Selected Validation Data



1x10⁶ human PBMCs were surface stained with CoraLite® Plus 488 Anti-Human CD19 (4G7) Mouse IgG2a Recombinant Antibody (CL488-65562, Clone: 4G7), and 5 ul CoraLite® Plus 647 Anti-Human ICAM-1/CD54 Rabbit RecAb (CL647-98011, Clone:240646A11) or CoraLite® Plus 647 Rabbit IgG Isotype Control RecAb (CL647-98136, Clone: 240953C9). Cells were incubated with FC Receptor Block prior to staining. Cells were incubated with FC



1x10⁶ human PBMCs were surface stained with 5 ul CoraLite® Plus 647 Anti-Human ICAM-1/CD54 Rabbit RecAb (CL647-98011, Clone:240646A11) (red) or CoraLite® Plus 647 Rabbit IgG Isotype Control RecAb (CL647-98136, Clone: 240953C9) (blue). Cells were incubated with FC Receptor Block prior to staining. Cells were not fixed.