

For Research Use Only

CoraLite® Plus 647 Anti-Mouse CD68 Rabbit Recombinant Antibody

Catalog Number: CL647-98029



Basic Information

Catalog Number:

CL647-98029

Size:

100ug , 500 µg/ml

Source:

Rabbit

Isotype:

IgG

GenBank Accession Number:

NM_001291058.1

GeneID (NCBI):

12514

UNIPROT ID:

P31996-1

Full Name:

CD68 antigen

Calculated MW:

35 kDa

Purification Method:

Protein A purification

CloneNo.:

230504G5

Excitation/Emission maxima wavelengths:

654 nm / 674 nm

Applications

Tested Applications:

FC (Intra)

Species Specificity:

mouse

Background Information

Mouse CD68 (also known as macrophage) is a type I transmembrane glycoprotein that is highly and specifically expressed by mouse tissue macrophages, and to a lesser extent by dendritic cells. It belongs to the lysosomal/endosomal-associated membrane glycoprotein (LAMP) family and primarily localizes to lysosomes and endosomes with a smaller fraction circulating to the cell surface. CD68 is also a member of the scavenger receptor family. It may play a role in phagocytic activities of tissue macrophages.

Storage

Storage:

Store at 2-8°C. Avoid exposure to light. Stable for one year after shipment.

Storage Buffer:

PBS with 0.09% sodium azide.

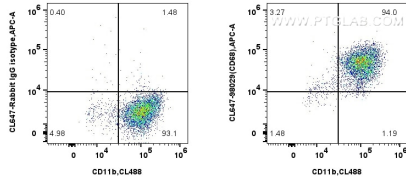
For technical support and original validation data for this product please contact:

T: 1 (888) 4PTGLAB (1-888-478-4522) (toll free in USA), or 1(312) 455-8498 (outside USA)

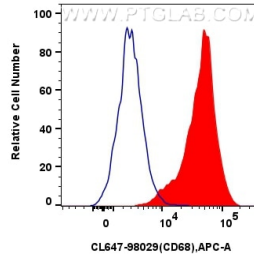
E: proteintech@ptglab.com
W: ptglab.com

This product is exclusively available under Proteintech Group brand and is not available to purchase from any other manufacturer.

Selected Validation Data



1x10⁶ mouse peritoneal macrophages were intracellularly stained with CoraLite® Plus 488 Anti-Mouse CD11b and 0.25 ug CoraLite® Plus 647 Anti-Mouse CD68 Rabbit Recombinant Antibody (CL647-98029, Clone:230504G5), or Isotype Control. Cells were fixed with 4% PFA and permeabilized with Flow Cytometry Perm Buffer (PF00011-C).



1x10⁶ mouse peritoneal macrophages were intracellularly stained with 0.25 ug CoraLite® Plus 647 Anti-Mouse CD68 Rabbit Recombinant Antibody (CL647-98029, Clone:230504G5)(red), or Isotype Control(blue). Cells were fixed with 4% PFA and permeabilized with Flow Cytometry Perm Buffer (PF00011-C).