

For Research Use Only

CoraLite® Plus 647 Anti-Mouse CXCL1 Rabbit Recombinant Antibody

Catalog Number: CL647-98047



Basic Information

Catalog Number:

CL647-98047

Size:

100ug , 500 µg/ml

Source:

Rabbit

Isotype:

IgG

GenBank Accession Number:

NM_008176

GeneID (NCBI):

14825

UNIPROT ID:

P12850-1

Full Name:

chemokine (C-X-C motif) ligand 1

Calculated MW:

10kd

Purification Method:

Protein A purification

CloneNo.:

240268D2

Excitation/Emission maxima

wavelengths:

654 nm / 674 nm

Applications

Tested Applications:

FC (Intra)

Species Specificity:

mouse

Background Information

CXCL1 is a member of CXC family and also known as keratinocyte-derived chemokines (KC) or growth-related oncogene (GRO). CXCL1 is expressed by macrophages, neutrophils and epithelial cells. CXCL1 binding specifically to the CXC chemokine receptor CXCR2, is involved in fibrogenesis and angiogenesis. This protein also plays a role in inflammation and as a chemoattractant for neutrophils. CXCL1 is upregulated in some types of human cancer, including colorectal, bladder, breast, prostate and skin cancers.

Storage

Storage:

Store at 2-8°C. Avoid exposure to light. Stable for one year after shipment.

Storage Buffer:

PBS with 0.09% sodium azide.

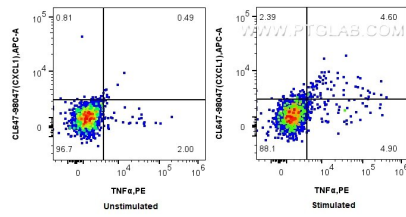
For technical support and original validation data for this product please contact:

T: 1 (888) 4PTGLAB (1-888-478-4522) (toll free in USA), or 1(312) 455-8498 (outside USA)

E: proteintech@ptglab.com
W: ptglab.com

This product is exclusively available under Proteintech Group brand and is not available to purchase from any other manufacturer.

Selected Validation Data



1x10⁶ untreated or LPS and Brefeldin A treated mouse splenocytes were intracellularly stained with PE Anti-Mouse TNF α and 0.125 μ g CoraLite[®] Plus 647 Anti-Mouse CXCL1 Rabbit Recombinant Antibody (CL647-98047, Clone: 240268D2). Cells were fixed with 4% PFA and permeabilized with Flow Cytometry Perm Buffer (PF00011-C).