

For Research Use Only

CoraLite® Plus 647 Anti-Rat ICAM-1/CD54 Rabbit Recombinant Antibody

Catalog Number: CL647-98060



Basic Information

Catalog Number:

CL647-98060

Size:

100ug , 500 ug/ml

Source:

Rabbit

Isotype:

IgG

Immunogen Catalog Number:

EG1025

GenBank Accession Number:

NM_012967.1

GeneID (NCBI):

25464

UNIPROT ID:

Q00238

Full Name:

intercellular adhesion molecule 1

Calculated MW:

60 kDa

Purification Method:

Protein A purification

CloneNo.:

240725C2

Recommended Dilutions:

FC: 0.25 ug per 10⁶ cells in a 100 µl suspension

Excitation/Emission maxima wavelengths:

654 nm / 674 nm

Applications

Tested Applications:

FC

Species Specificity:

rat

Positive Controls:

FC : rat splenocytes,

Background Information

ICAM-1 (CD54) is a transmembrane glycoprotein of the immunoglobulin superfamily and is critical for the firm attachment and transmigration of leukocytes out of blood vessels and into tissues (PMID: 19307690). ICAM-1 is expressed by several cell types, typically on endothelial cells and cells of the immune system, and its expression can be up-regulated by various stimuli, including TNF- α , INF- γ , IL-1 and thrombin (PMID: 3086451; 9694714; 15979056). It is a ligand for LFA-1 and Mac-1, serves as a receptor for rhinovirus, and is one of several receptors used by Plasmodium falciparum (PMID: 2566624; 2538244; 2475784).

Storage

Storage:

Store at 2-8°C. Avoid exposure to light. Stable for one year after shipment.

Storage Buffer:

PBS with 0.09% sodium azide, pH7.3

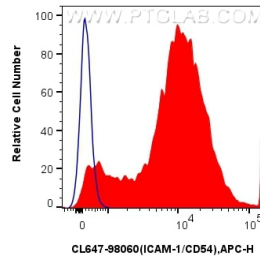
For technical support and original validation data for this product please contact:

T: 1 (888) 4PTGLAB (1-888-478-4522) (toll free in USA), or 1(312) 455-8498 (outside USA)

E: proteintech@ptglab.com
W: ptglab.com

This product is exclusively available under Proteintech Group brand and is not available to purchase from any other manufacturer.

Selected Validation Data



1×10^6 rat splenocytes were surface stained with 0.25 μ g CoraLite® Plus 647 Anti-Rat ICAM-1/CD54 Rabbit RecAb (CL647-98060, Clone: 240725C2)(red) or CoraLite® Plus 647 Rabbit IgG Isotype Control RecAb (CL647-98136, Clone: 240953C9) (blue). Cells were not fixed.