

For Research Use Only

# CoraLite® Plus 647 Anti-Human PD-L1/CD274 Rabbit Recombinant Antibody

Catalog Number: CL647-98062



## Basic Information

<b>Catalog Number:</b> CL647-98062	<b>GenBank Accession Number:</b> BC074984	<b>Purification Method:</b> Protein A purification
<b>Size:</b> 100tests , 5 ul/test	<b>GeneID (NCBI):</b> 29126	<b>CloneNo.:</b> 240721H8
<b>Source:</b> Rabbit	<b>UNIPROT ID:</b> Q9NZQ7	<b>Excitation/Emission maxima wavelengths:</b> 654 nm / 674 nm
<b>Isotype:</b> IgG	<b>Full Name:</b> CD274 molecule	
<b>Immunogen Catalog Number:</b> EG1114	<b>Calculated MW:</b> 290 aa, 33 kDa	

## Applications

**Tested Applications:**  
FC  
**Species Specificity:**  
human

## Background Information

Programmed cell death ligand 1 (PD-L1, CD274, or B7-H1), is the first member of B7 family to be discovered. B7 family molecules are type I transmembrane proteins belonging to the immunoglobulin superfamily. In concert with their CD28 family receptors, the B7s are key regulators of the adaptive immune response. PD-L1 is suggested as a negative regulator of T and B cell, and plays important role in mediating tolerance of lymphocytes to self-antigens. It is also involved in the costimulatory signal, essential for T-cell proliferation and production of IL10 and IFNG, in an IL2-dependent and a PD-1-independent manner.

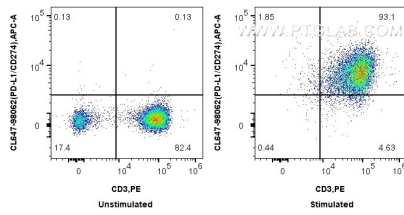
## Storage

**Storage:**  
Store at 2-8°C. Avoid exposure to light. Stable for one year after shipment.  
**Storage Buffer:**  
PBS with 0.09% sodium azide and 0.5% BSA, pH7.3

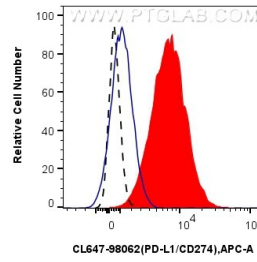
For technical support and original validation data for this product please contact:  
T: 1 (888) 4PTGLAB (1-888-478-4522) (toll free in USA), or 1(312) 455-8498 (outside USA)  
E: [proteintech@ptglab.com](mailto:proteintech@ptglab.com)  
W: [ptglab.com](http://ptglab.com)

This product is exclusively available under Proteintech Group brand and is not available to purchase from any other manufacturer.

## Selected Validation Data



1x10<sup>6</sup> untreated or PHA-treated human PBMCs were surface stained with PE Anti-Human CD3 and 5 ul CoraLite® Plus 647 Anti-Human PD-L1/CD274 Rabbit RecAb (CL647-98062, Clone: 240721H8). Cells were not fixed.



1x10<sup>6</sup> PHA treated human PBMCs were surface stained with 5 ul CoraLite® Plus 647 Anti-Human PD-L1/CD274 Rabbit RecAb (CL647-98062, Clone: 240721H8) (red) or CoraLite® Plus 647 Rabbit IgG Isotype Control RecAb (CL647-98136, Clone: 240953C9) (blue). Untreated human PBMCs were surface stained with 5 ul CoraLite® Plus 647 Anti-Human PD-L1/CD274 Rabbit RecAb (CL647-98062, Clone:240721H8) (black, dashed). Cells were not fixed.