

For Research Use Only

# CoraLite® Plus 647 Anti-Human IFNAR1 Rabbit Recombinant Antibody

Catalog Number:CL647-98067



## Basic Information

Catalog Number:

CL647-98067

Size:

100tests , 5 ul/test

Source:

Rabbit

Isotype:

IgG

Immunogen Catalog Number:

EG0156

GenBank Accession Number:

BC021825

GeneID (NCBI):

3454

UNIPROT ID:

P17181

Full Name:

interferon (alpha, beta and omega) receptor 1

Calculated MW:

557 aa, 64 kDa

Purification Method:

Protein A purification

CloneNo.:

230549B1

Recommended Dilutions:

FC: 5 ul per 10<sup>6</sup> cells in a 100 µl suspension

Excitation/Emission maxima wavelengths:

654 nm / 674 nm

## Applications

Tested Applications:

FC

Species Specificity:

human

Positive Controls:

FC : U-937 cells,

## Background Information

Interferon alpha and beta receptor subunit 1 (IFNAR1) is a type I membrane protein that associates with IFNAR2 to form the receptor for type I interferons, including interferons-alpha, -beta, and -lambda. Binding and activation of the receptor stimulates Janus protein kinases, which in turn phosphorylate several proteins, including STAT1 and STAT2, and then increase transcription of the IFN-induced genes whose products exert antiviral, immunomodulatory, and antiproliferative effects.

## Storage

Storage:

Store at 2-8°C. Avoid exposure to light. Stable for one year after shipment.

Storage Buffer:

PBS with 0.09% sodium azide and 0.5% BSA, pH7.3

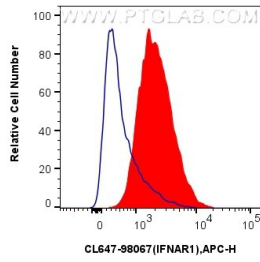
For technical support and original validation data for this product please contact:

T: 1 (888) 4PTGLAB (1-888-478-4522) (toll free in USA), or 1(312) 455-8498 (outside USA)

E: [proteintech@ptglab.com](mailto:proteintech@ptglab.com)  
W: [ptglab.com](http://ptglab.com)

**This product is exclusively available under Proteintech Group brand and is not available to purchase from any other manufacturer.**

## Selected Validation Data



1x10<sup>6</sup> U-937 cells were surface stained with 5 ul CoraLite® Plus 647 Anti-Human IFNAR1 Rabbit RecAb (CL647-98067, Clone:230549B1)(red) or CoraLite® Plus 647 Rabbit IgG Isotype Control Recombinant Antibody (CL647-98136, Clone: 240953C9). Cells were not fixed.