

For Research Use Only

# CoraLite® Plus 647 Anti-Mouse CD34 Rabbit Recombinant Antibody

Catalog Number: CL647-98069



## Basic Information

<b>Catalog Number:</b> CL647-98069	<b>GenBank Accession Number:</b> NM_133654	<b>Purification Method:</b> Protein A purification
<b>Size:</b> 100ug , 500 ug/ml	<b>GeneID (NCBI):</b> 12490	<b>CloneNo.:</b> 240659B11
<b>Source:</b> Rabbit	<b>UNIPROT ID:</b> Q64314	<b>Excitation/Emission maxima wavelengths:</b> 654 nm / 674 nm
<b>Isotype:</b> IgG	<b>Full Name:</b> CD34 antigen	
<b>Immunogen Catalog Number:</b> EG0854	<b>Calculated MW:</b> 41 kDa	

## Applications

**Tested Applications:**  
FC

**Species Specificity:**  
mouse

## Background Information

CD34 is a 105- to 120-kDa glycoprophosphoprotein expressed on the majority of hematopoietic stem/progenitor cells, bone marrow stromal cells, capillary endothelial cells, embryonic fibroblasts, and some nerve tissue. CD34 is a commonly used marker for identifying human hematopoietic stem/progenitor cells and mediates cell adhesion and lymphocyte homing by binding L-selectin and E-selectin ligands. CD34 is also one of the best negative selection markers for characterizing and/or isolating human MSCs from bone marrow and other sources. Along with other positive selection markers (such as CD29, CD44, CD90, CD105 and CD166), negative selection markers (such as CD34 and CD45) are used for MSC identification.

## Storage

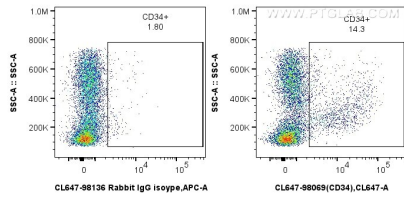
**Storage:**  
Store at 2-8°C. Avoid exposure to light. Stable for one year after shipment.

**Storage Buffer:**  
PBS with 0.09% sodium azide, pH7.3

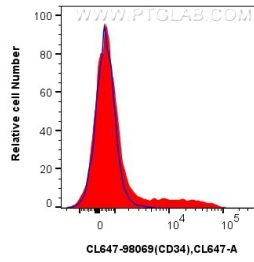
For technical support and original validation data for this product please contact:  
T: 1 (888) 4PTGLAB (1-888-478-4522) (toll free in USA), or 1(312) 455-8498 (outside USA)  
E: [proteintech@ptglab.com](mailto:proteintech@ptglab.com)  
W: [ptglab.com](http://ptglab.com)

This product is exclusively available under Proteintech Group brand and is not available to purchase from any other manufacturer.

## Selected Validation Data



1x10<sup>6</sup> mouse bone marrow cells were surface stained with 0.25 ug CoraLite® Plus 647 Anti-Mouse CD34 Rabbit RecAb (CL647-98069, Clone: 240659B11) or CoraLite® Plus 647 Rabbit IgG Isotype Control RecAb (CL647-98136, Clone: 240953C9). Cells were incubated with FC Receptor Block prior to staining. Cells were not fixed.



1x10<sup>6</sup> mouse bone marrow cells were surface stained with 0.25 ug CoraLite® Plus 647 Anti-Mouse CD34 Rabbit RecAb (CL647-98069, Clone: 240659B11) (red) or CoraLite® Plus 647 Rabbit IgG Isotype Control RecAb (CL647-98136, Clone: 240953C9) (blue). Cells were incubated with FC Receptor Block prior to staining. Cells were not fixed.