

For Research Use Only

# CoraLite® Plus 647 Anti-Human CD70 Rabbit Recombinant Antibody

Catalog Number: CL647-98098



## Basic Information

Catalog Number:

CL647-98098

Size:

100 tests, 5 ul/test

Source:

Rabbit

Isotype:

IgG

GenBank Accession Number:

BC000725

GeneID (NCBI):

970

UNIPROT ID:

P32970

Full Name:

CD70 molecule

Calculated MW:

21 kDa

Purification Method:

Protein A purification

CloneNo.:

241325D8

Excitation/Emission maxima wavelengths:

654 nm / 674 nm

## Applications

Tested Applications:

FC

Species Specificity:

human

## Background Information

CD70, also known as tumor necrosis factor ligand superfamily member 7 (TNFSF7) or CD27 ligand (CD27L), is a transmembrane protein that plays a significant role in the immune system. It is the unique ligand for CD27, a member of the tumor necrosis factor receptor (TNFR) family, and is transiently upregulated upon stimulation of immune cells. CD70 is expressed on lymphocytes and dendritic cells, and its expression can be regulated by activation signals received via toll-like receptors (TLRs), CD40, and the antigen receptor MHC II. It provides complex and not completely understood signaling for B cell development. CD70 is also expressed on various solid tumors and hematolymphoid malignancies, where it may contribute to a poor prognosis.

## Storage

Storage:

Store at 2-8°C. Avoid exposure to light. Stable for one year after shipment.

Storage Buffer:

PBS with 0.09% sodium azide and 0.5% BSA

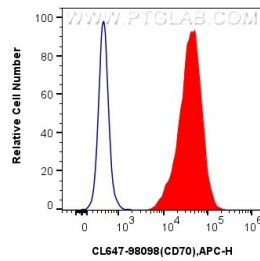
For technical support and original validation data for this product please contact:

T: 1 (888) 4PTGLAB (1-888-478-4522) (toll free in USA), or 1(312) 455-8498 (outside USA)

E: [proteintech@ptglab.com](mailto:proteintech@ptglab.com)  
W: [ptglab.com](http://ptglab.com)

This product is exclusively available under Proteintech Group brand and is not available to purchase from any other manufacturer.

## Selected Validation Data



1x10<sup>6</sup> U266 cells were surface stained with 5 ul CoraLite® Plus 647 Anti-Human CD70 Rabbit RecAb (CL647-98098, Clone: 241325D8) (red), or CoraLite® Plus 647 Rabbit IgG Isotype Control RecAb (CL647-98136, Clone: 240953C9) (blue). Cells were not fixed.