

For Research Use Only

CoraLite® Plus 647 Anti-Human IL3RA/CD123 Rabbit Recombinant Antibody

Catalog Number: CL647-98107



Basic Information

Catalog Number: CL647-98107	GenBank Accession Number: BC035407	Purification Method: Protein A purification
Size: 100tests , 5 ul/test	GeneID (NCBI): 3563	CloneNo.: 241268E3
Source: Rabbit	ENSEMBL Gene ID: ENSG00000185291	Excitation/Emission maxima wavelengths: 654 nm / 674 nm
Isotype: IgG	UNIPROT ID: P26951	
	Full Name: interleukin 3 receptor, alpha (low affinity)	
	Calculated MW: 378 aa, 43 kDa	

Applications

Tested Applications:
FC

Species Specificity:
human

Background Information

Interleukin-3 receptor subunit alpha (IL3RA), also known as CD123, belongs to the cytokine receptor family. It is a glycoprotein containing an extracellular domain, involving a predicted Ig-like domain, two FnIII domains, a transmembrane domain and an intracellular domain (PMID: 24513123). IL3RA is expressed on hematopoietic progenitor cells, plasmacytoid dendritic cells, basophils, monocytes, some B cells, and in a variety of hematologic malignancies (PMID: 10527461; 34855461). IL-3 initially binds to IL3RA and subsequently recruits the beta chain (CD131) to form the high-affinity receptor, resulting in the activation of a series of signaling pathways including the JAK/STAT, Ras-MAPK, and phosphatidylinositol 3-kinase pathways (PMID: 29296749). IL-3R signaling regulates the proliferation, survival, and differentiation of hematopoietic cells.

Storage

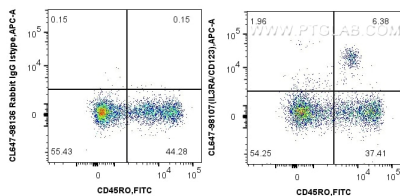
Storage:
Store at 2-8°C. Avoid exposure to light. Stable for one year after shipment.

Storage Buffer:
PBS with 0.09% sodium azide.

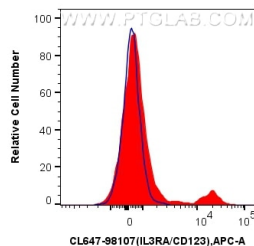
For technical support and original validation data for this product please contact:
T: 1 (888) 4PTGLAB (1-888-478-4522) (toll free in USA), or 1(312) 455-8498 (outside USA)
E: proteintech@ptglab.com
W: ptglab.com

This product is exclusively available under Proteintech Group brand and is not available to purchase from any other manufacturer.

Selected Validation Data



1x10⁶ FC PBMCs were surface stained with FITC Plus Anti-Human CD45RO and 5 ul CoraLite® Plus 647 Anti-Human IL3RA/CD123 Rabbit Recombinant Antibody (CL647-98107, Clone:241268E3), or CoraLite® Plus 647 Rabbit IgG Isotype Control Recombinant Antibody (CL647-98136, Clone: 240953C9). Cells were incubated with FC Receptor Block prior to staining. Cells were not fixed. Lymphocytes were gated.



1x10⁶ human PBMCs were surface stained with 5 ul CoraLite® Plus 647 Anti-Human IL3RA/CD123 Rabbit Recombinant Antibody (CL647-98107, Clone:241268E3)(red), or CoraLite® Plus 647 Rabbit IgG Isotype Control Recombinant Antibody (CL647-98136, Clone: 240953C9)(blue). Cells were incubated with FC Receptor Block prior to staining. Cells were not fixed. Lymphocytes were gated.