

For Research Use Only

# CoraLite® Plus 647 Anti-Human CD160 Rabbit Recombinant Antibody

Catalog Number:CL647-98111



## Basic Information

Catalog Number:

CL647-98111

Size:

100tests , 5 ul/test

Source:

Rabbit

Isotype:

IgG

GenBank Accession Number:

BC014465

GeneID (NCBI):

11126

UNIPROT ID:

O95971

Full Name:

CD160 molecule

Calculated MW:

20 kDa

Purification Method:

Protein A purification

CloneNo.:

241415F2

Recommended Dilutions:

FC: 5 ul per 10<sup>6</sup> cells in a 100 µl suspension

Excitation/Emission maxima wavelengths:

654 nm / 674 nm

## Applications

Tested Applications:

FC

Species Specificity:

human

Positive Controls:

FC : human peripheral blood leukocytes,

## Background Information

CD160 is a glycosylphosphatidylinositol (GPI)-anchored protein that is expressed on almost all intestinal intraepithelial lymphocytes (IELs), gamma delta T cells, CD56 (dim) CD16+ cytotoxic NK cells, and a minor subset of CD4+ and CD8+ T cells (PMID: 31332204; 25179432). The binding of CD160 to both classical and non-classical MHC I enhances NK and CD8+ cytotoxic T lymphocyte functions (PMID: 25179432). CD160 is a ligand for HVEM (herpes virus entry mediator) and the binding of CD160 to HVEM inhibits T cell activity (PMID: 19426226).

## Storage

Storage:

Store at 2-8°C. Avoid exposure to light. Stable for one year after shipment.

Storage Buffer:

PBS with 0.09% sodium azide and 0.5% BSA, pH7.3

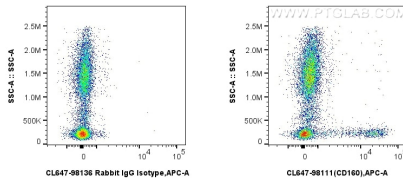
For technical support and original validation data for this product please contact:

T: 1 (888) 4PTGLAB (1-888-478-4522) (toll free in USA), or 1(312) 455-8498 (outside USA)

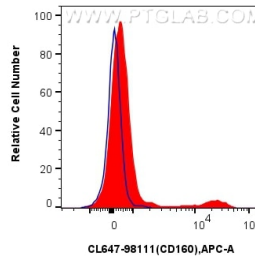
E: [proteintech@ptglab.com](mailto:proteintech@ptglab.com)  
W: [ptglab.com](http://ptglab.com)

This product is exclusively available under Proteintech Group brand and is not available to purchase from any other manufacturer.

## Selected Validation Data



1x10<sup>6</sup> human peripheral blood leukocytes were surface stained with 5 ul CoraLite® Plus 647 Anti-Human CD160 Rabbit RecAb (CL647-98111, Clone:241415F2) or CoraLite® Plus 647 Rabbit IgG Isotype Control Recombinant Antibody (CL647-98136, Clone: 240953C9). Cells were incubated with FC Receptor Block prior to staining. Cells were not fixed.



1x10<sup>6</sup> human peripheral blood leukocytes were surface stained with 5 ul CoraLite® Plus 647 Anti-Human CD160 Rabbit RecAb (CL647-98111, Clone:241415F2) (red) or CoraLite® Plus 647 Rabbit IgG Isotype Control Recombinant Antibody (CL647-98136, Clone: 240953C9) (blue). Cells were incubated with FC Receptor Block prior to staining. Cells were not fixed.