

For Research Use Only



# CoraLite® Plus 647 Anti-Mouse NCAM1/CD56 Rabbit Recombinant Antibody

Catalog Number: **CL647-98118**

## Basic Information

<b>Catalog Number:</b> CL647-98118	<b>GenBank Accession Number:</b> GeneID (NCBI): 17967	<b>Purification Method:</b> Protein A purification
<b>Size:</b> 100ug , 500 ug/ml	<b>UNIPROT ID:</b> P13595-1	<b>CloneNo.:</b> 240936A4
<b>Source:</b> Rabbit	<b>Full Name:</b> neural cell adhesion molecule 1	<b>Recommended Dilutions:</b> FC: 0.25 ug per 10 <sup>6</sup> cells in a 100 µl suspension
<b>Isotype:</b> IgG	<b>Calculated MW:</b> 119 kDa	<b>Excitation/Emission maxima wavelengths:</b> 654 nm / 674 nm
<b>Immunogen Catalog Number:</b> EG0652		

## Applications

<b>Tested Applications:</b> FC	<b>Positive Controls:</b> FC : mouse bone marrow cells,
<b>Species Specificity:</b> mouse	

## Background Information

Neural cell adhesion molecule 1 (NCAM1, also known as CD56, NCAM, and MSK39) is a membrane-bound cell surface glycoprotein and a member of the immunoglobulin supergene family, which induces cell-to-cell interactions during embryonic development, cell migration, and organogenesis (PMID: 8013635; 1855476; 1391354). Mouse natural killer (NK) cells do not express the murine homolog of CD56 (PMID: 17100875). The molecular weight of NCAM1 changes from the 120 kDa isoform in normal tissue to the 140/180 kDa isoforms in tumors (PMID: 10086383).

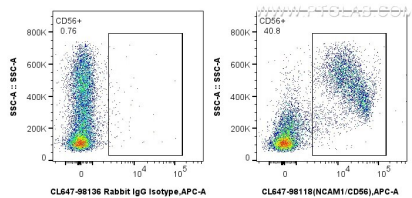
## Storage

**Storage:**  
Store at 2-8°C. Avoid exposure to light. Stable for one year after shipment.  
**Storage Buffer:**  
PBS with 0.09% sodium azide, pH7.3

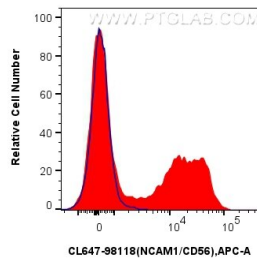
For technical support and original validation data for this product please contact:  
T: 1 (888) 4PTGLAB (1-888-478-4522) (toll free in USA), or 1(312) 455-8498 (outside USA)  
E: [proteintech@ptglab.com](mailto:proteintech@ptglab.com)  
W: [ptglab.com](http://ptglab.com)

This product is exclusively available under Proteintech Group brand and is not available to purchase from any other manufacturer.

## Selected Validation Data



1x10<sup>6</sup> mouse bone marrow cells were surface stained with 0.25 ug CoraLite® Plus 647 Anti-Mouse NCAM1/CD56 Rabbit RecAb (CL647-98118, Clone:240936A4)(red), or 0.25 ug CoraLite® Plus 647 Rabbit IgG Isotype Control RecAb (CL647-98136, Clone: 240953C9) (blue). Cells were not fixed.



1x10<sup>6</sup> mouse bone marrow cells were surface stained with 0.25 ug CoraLite® Plus 647 Anti-Mouse NCAM1/CD56 Rabbit RecAb (CL647-98118, Clone:240936A4)(red), or 0.25 ug CoraLite® Plus 647 Rabbit IgG Isotype Control RecAb (CL647-98136, Clone: 240953C9) (blue). Cells were not fixed.