

For Research Use Only

# CoraLite® Plus 647 Anti-Human CD30/TNFRSF8 Rabbit Recombinant Antibody

Catalog Number: CL647-98124



## Basic Information

Catalog Number:

CL647-98124

Size:

100 tests, 5 µl/test

Source:

Rabbit

Isotype:

IgG

GenBank Accession Number:

NM\_001243

GeneID (NCBI):

943

UNIPROT ID:

P28908

Full Name:

tumor necrosis factor receptor superfamily, member 8

Calculated MW:

64 kDa

Purification Method:

Protein A purification

CloneNo.:

241330A12

Recommended Dilutions:

FC: 5 µl per 10<sup>6</sup> cells in a 100 µl suspension

Excitation/Emission maxima wavelengths:

654 nm / 674 nm

## Applications

Tested Applications:

FC

Species Specificity:

human

Positive Controls:

FC : PHA-treated human PBMCs,

## Background Information

CD30, also known as TNFRSF8 or Ki-1, is a transmembrane glycoprotein belonging to the tumor necrosis factor receptor superfamily. It is composed of an extracellular domain with six cysteine-rich repeats, a transmembrane segment, and an intracellular domain (PMID: 1310894). CD30 is expressed on a small subset of activated T and B lymphocytes, and a variety of lymphoid neoplasms, with the highest expression in classical Hodgkin's lymphoma and anaplastic large cell lymphoma (PMID: 9826579; 28885612). The CD30 ligand (CD30L or CD153) is a type II transmembrane glycoprotein of the tumor necrosis factor ligand superfamily (PMID: 8701986). Signal transduction of CD30/CD30L utilizes signal transducers, TNFR-associated factors (TRAF1, 2, 3 and 5) (PMID: 9826579).

## Storage

Storage:

Store at 2-8°C. Avoid exposure to light. Stable for one year after shipment.

Storage Buffer:

PBS with 0.09% sodium azide and 0.5% BSA, pH7.3

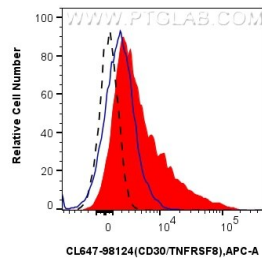
For technical support and original validation data for this product please contact:

T: 1 (888) 4PTGLAB (1-888-478-4522) (toll free in USA), or 1(312) 455-8498 (outside USA)

E: [proteintech@ptglab.com](mailto:proteintech@ptglab.com)  
W: [ptglab.com](http://ptglab.com)

This product is exclusively available under Proteintech Group brand and is not available to purchase from any other manufacturer.

## Selected Validation Data



1x10<sup>6</sup> PHA-treated human PBMCs were surface stained with 5 ul CoraLite® Plus 647 Anti-Human CD30/TNFRSF8 Rabbit RecAb (CL647-98124, Clone: 241330A12) (red) or CoraLite® Plus 647 Rabbit IgG Isotype Control RecAb (CL647-98136, Clone: 240953C9) (blue). 1x10<sup>6</sup> untreated human PBMCs were surface stained with 5 ul CoraLite® Plus 647 Anti-Human CD30/TNFRSF8 Rabbit RecAb (CL647-98124, Clone: 241330A12) (black, dashed). Cells

