

For Research Use Only

CoraLite® Plus 647 Anti-Human TWEAKR/CD266 Rabbit Recombinant Antibody

Catalog Number: CL647-98125



Basic Information

Catalog Number:

CL647-98125

Size:

100 tests, 5 ul/test

Source:

Rabbit

Isotype:

IgG

Immunogen Catalog Number:

AG13823

GenBank Accession Number:

BC002718

GeneID (NCBI):

51330

UNIPROT ID:

Q9NP84

Full Name:

tumor necrosis factor receptor superfamily, member 12A

Calculated MW:

129 aa, 14 kDa

Purification Method:

Protein A purification

CloneNo.:

240991C5

Excitation/Emission maxima wavelengths:

654 nm / 674 nm

Applications

Tested Applications:

FC

Species Specificity:

human

Positive Controls:

FC : HT-1080 cells,

Background Information

TWEAKR (also known as CD266, FN14, TNFRSF12A) is a member of the TNF receptor superfamily which is activated by its ligand, the cytokine TWEAK (TNFSF12). TWEAKR is the smallest member of the TNFR superfamily. TweakR was first described as an FGF-inducible gene that played a role in fibroblast adhesion and migration. Subsequently, the induction of TweakR expression by other growth factors and/or upon tissue injury was observed in multiple cell types, including hepatocytes, endothelial cells, adipocytes, and cardiomyocytes. (PMID: 23073510, PMID: 24409185)

Storage

Storage:

Store at 2-8°C. Avoid exposure to light. Stable for one year after shipment.

Storage Buffer:

PBS with 0.09% sodium azide and 0.5% BSA, pH7.3

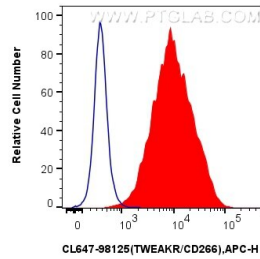
For technical support and original validation data for this product please contact:

T: 1 (888) 4PTGLAB (1-888-478-4522) (toll free in USA), or 1(312) 455-8498 (outside USA)

E: proteintech@ptglab.com
W: ptglab.com

This product is exclusively available under Proteintech Group brand and is not available to purchase from any other manufacturer.

Selected Validation Data



1x10⁶ HT-1080 cells were surface stained with 5 ul CoraLite® Plus 647 Anti-Human TWEAKR/CD266 Rabbit RecAb (CL647-98125, Clone:240991C5)(red) or 5 ul CoraLite® Plus 647 Rabbit IgG Isotype Control RecAb (CL647-98136, Clone: 240953C9) (blue). Cells were not fixed.