

For Research Use Only

CoraLite® Plus 647 Anti-Human PDGFR alpha/CD140a Rabbit Recombinant Antibody

Catalog Number: **CL647-98141**



Basic Information

Catalog Number:

CL647-98141

Size:

100tests , 5 ul/test

Source:

Rabbit

Isotype:

IgG

GenBank Accession Number:

BC015186

GeneID (NCBI):

5156

UNIPROT ID:

P16234

Full Name:

platelet-derived growth factor receptor, alpha polypeptide

Calculated MW:

123 kDa

Purification Method:

Protein A purification

CloneNo.:

241658H4

Excitation/Emission maxima wavelengths:

654 nm / 674 nm

Applications

Tested Applications:

FC

Species Specificity:

human

Background Information

Platelet-derived growth factor receptor alpha (PDGFR alpha, also known as CD140a) is a cell surface tyrosine kinase receptor for members of the platelet-derived growth factor family. PDGFRA is implicated in the regulation of embryonic development, tumorigenesis, cell proliferation, survival, and chemotaxis. Mutations in the PDGFRA gene have been associated with idiopathic hypereosinophilic syndrome, somatic and familial gastrointestinal stromal tumors, and a variety of other cancers.

Storage

Storage:

Store at 2-8°C. Avoid exposure to light. Stable for one year after shipment.

Storage Buffer:

PBS with 0.09% sodium azide and 0.5% BSA.

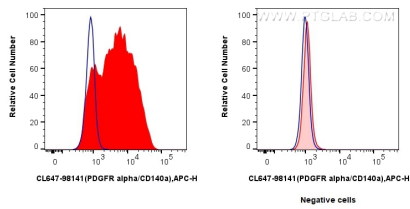
For technical support and original validation data for this product please contact:

T: 1 (888) 4PTGLAB (1-888-478-4522) (toll free in USA), or 1(312) 455-8498 (outside USA)

E: proteintech@ptglab.com
W: ptglab.com

This product is exclusively available under Proteintech Group brand and is not available to purchase from any other manufacturer.

Selected Validation Data



1x10⁶ MG-63 cells (left) or A-172 cells (right) were surface stained with 5 μ l CoraLite® Plus 647 Anti-Human PDGFR alpha/CD140a Rabbit Recombinant Antibody (CL647-98141, Clone: 241658H4) (red), or CoraLite® Plus 647 Rabbit IgG Isotype Control Recombinant Antibody (CL647-98136, Clone: 240953C9) (blue). Cells were not fixed.