

For Research Use Only

CoraLite® Plus 647 Anti-Human Ki-67 Rabbit Recombinant Antibody

Catalog Number: CL647-98143



Basic Information

Catalog Number:

CL647-98143

Size:

100 tests, 5 ul/test

Source:

Rabbit

Isotype:

IgG

GenBank Accession Number:

NM_002417

GeneID (NCBI):

4288

UNIPROT ID:

P46013

Full Name:

antigen identified by monoclonal antibody Ki-67

Calculated MW:

359 kDa

Purification Method:

Protein A purification

CloneNo.:

241499B1

Excitation/Emission maxima wavelengths:

654 nm / 674 nm

Applications

Tested Applications:

FC (Intra)

Species Specificity:

human

Background Information

The Ki-67 protein (also known as MKI67) is a cellular marker for proliferation. Ki67 is present during all active phases of the cell cycle (G1, S, G2 and M), but is absent in resting cells (G0). Cellular content of Ki-67 protein markedly increases during cell progression through S phase of the cell cycle. Therefore, the nuclear expression of Ki67 can be evaluated to assess tumor proliferation by immunohistochemistry. It has been demonstrated to be of prognostic value in breast cancer. In head and neck cancer, several studies have reported an association between high proliferative activity and poorer prognosis.

Storage

Storage:

Store at 2-8°C. Avoid exposure to light. Stable for one year after shipment.

Storage Buffer:

PBS with 0.09% sodium azide and 0.5% BSA, pH7.3

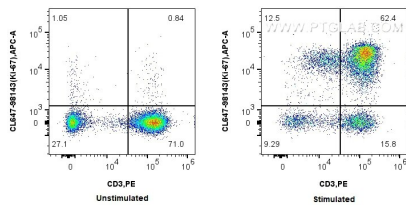
For technical support and original validation data for this product please contact:

T: 1 (888) 4PTGLAB (1-888-478-4522) (toll free in USA), or 1(312) 455-8498 (outside USA)

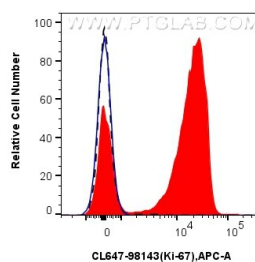
E: proteintech@ptglab.com
W: ptglab.com

This product is exclusively available under Proteintech Group brand and is not available to purchase from any other manufacturer.

Selected Validation Data



1x10⁶ untreated or PHA-treated human PBMCs were intracellularly stained with PE Anti-Human CD3 and 5 ul CoraLite® Plus 647 Anti-Human Ki-67 Rabbit RecAb (CL647-98143, Clone: 241499B1). Cells were fixed and permeabilized with Transcription Factor Staining Buffer Kit (PF00011).



1x10⁶ PHA-treated human PBMCs were intracellularly stained with 5 ul CoraLite® Plus 647 Anti-Human Ki-67 Rabbit RecAb (CL647-98143, Clone: 241499B1) (red) or CoraLite® Plus 647 Rabbit IgG Isotype Control RecAb (CL647-98136, Clone: 240953C9) (blue). 1x10⁶ untreated human PBMCs were intracellularly stained with 5 ul CoraLite® Plus 647 Anti-Human Ki-67 Rabbit RecAb (CL647-98143, Clone: 241499B1) (black, dashed). Cells were fixed and

