

For Research Use Only

CoraLite® Plus 647 Anti-Mouse CD23 Rabbit Recombinant Antibody

Catalog Number: CL647-98164



Basic Information

Catalog Number:

CL647-98164

Size:

100ug , 500 µg/ml

Source:

Rabbit

Isotype:

IgG

GenBank Accession Number:

EDL21948.1

GeneID (NCBI):

14128

UNIPROT ID:

P20693-1

Full Name:

Fc receptor, IgE, low affinity II, alpha polypeptide

Calculated MW:

38kDa

Purification Method:

Protein A purification

CloneNo.:

241385D1

Excitation/Emission maxima wavelengths:

654 nm / 674 nm

Applications

Tested Applications:

FC

Species Specificity:

mouse

Background Information

CD23, also known as low-affinity immunoglobulin epsilon Fc receptor, is a transmembrane glycoprotein present on a subpopulation of B lymphocytes in germinal centers, EBV-transformed B-lymphoblastoid cell lines, follicular dendritic cells, and a subpopulation of peripheral blood cells. CD23 has essential roles in the regulation of IgE production and in the differentiation of B-cells

Storage

Storage:

Store at 2-8°C. Avoid exposure to light. Stable for one year after shipment.

Storage Buffer:

PBS with 0.09% sodium azide.

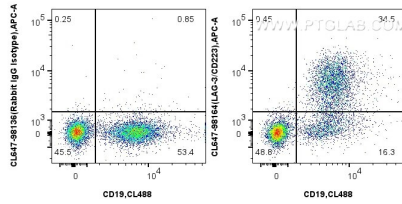
For technical support and original validation data for this product please contact:

T: 1 (888) 4PTGLAB (1-888-478-4522) (toll free in USA), or 1(312) 455-8498 (outside USA)

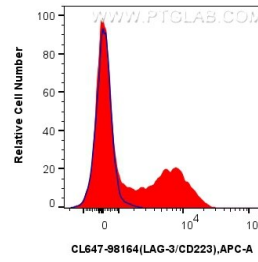
E: proteintech@ptglab.com
W: ptglab.com

This product is exclusively available under Proteintech Group brand and is not available to purchase from any other manufacturer.

Selected Validation Data



1x10⁶ mouse splenocytes were surface stained with 0.25 ug CoraLite® Plus 647 Anti-Mouse CD23 Rabbit Recombinant Antibody (CL647-98164, Clone: 241385D1) or CoraLite® Plus 647 Rabbit IgG Isotype Control Recombinant Antibody (CL647-98136, Clone: 240953C9). Cells were co-stained with CoraLite® Plus 488 Anti-Mouse CD19 (1D3) (CL488-65290, Clone: 1D3). Cells were not fixed.



1x10⁶ mouse splenocytes were surface stained with 0.25 ug CoraLite® Plus 647 Anti-Mouse CD23 Rabbit Recombinant Antibody (CL647-98164, Clone: 241385D1) (red) or CoraLite® Plus 647 Rabbit IgG Isotype Control Recombinant Antibody (CL647-98136, Clone: 240953C9) (blue). Cells were not fixed.