

For Research Use Only

CoraLite® Plus 647 Anti-Human CD94 Rabbit Recombinant Antibody

Catalog Number: CL647-98172



Basic Information

Catalog Number:

CL647-98172

Size:

100 tests, 5 µl/test

Source:

Rabbit

Isotype:

IgG

GenBank Accession Number:

BC028009

GeneID (NCBI):

3824

UNIPROT ID:

Q13241

Full Name:

killer cell lectin-like receptor
subfamily D, member 1

Calculated MW:

179 aa, 20 kDa

Purification Method:

Protein A purification

CloneNo.:

241704E11

Recommended Dilutions:

FC: 5 µl per 10⁶ cells in a 100 µl
suspension

Excitation/Emission maxima
wavelengths:

654 nm / 674 nm

Applications

Tested Applications:

FC

Species Specificity:

human

Positive Controls:

FC : human peripheral blood leukocytes,

Background Information

CD94, also known as KLRD1, is a membrane protein that is preferentially expressed on NK cells. CD94 can form disulfide-bonded heterodimers with NKG2 family members. The CD94/NKG2A heterodimer constitutes an inhibitory receptor that recognizes HLA-E.

Storage

Storage:

Store at 2-8°C. Avoid exposure to light. Stable for one year after shipment.

Storage Buffer:

PBS with 0.09% sodium azide and 0.5% BSA, pH7.3

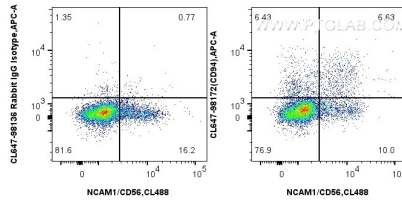
For technical support and original validation data for this product please contact:

T: 1 (888) 4PTGLAB (1-888-478-4522) (toll free
in USA), or 1(312) 455-8498 (outside USA)

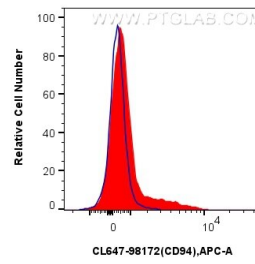
E: proteintech@ptglab.com
W: ptglab.com

This product is exclusively available under Proteintech Group brand and is not available to purchase from any other manufacturer.

Selected Validation Data



1x10⁶ FC receptor blocked human peripheral blood leukocytes were surface stained with CoraLite® Plus 488 Anti-Human NCAM1/CD56, and 5 ul CoraLite® Plus 647 Anti-Human CD94 Rabbit RecAb (CL647-98172, Clone: 241704E11) or CoraLite® Plus 647 Rabbit IgG Isotype Control RecAb (CL647-98136, Clone: 240953C9). Cells were incubated with FC Receptor Block prior to staining. Cells were not fixed.



1x10⁶ FC receptor blocked human peripheral blood leukocytes were surface stained with 5 ul CoraLite® Plus 647 Anti-Human CD94 Rabbit RecAb (CL647-98172, Clone: 241704E11) (red) or CoraLite® Plus 647 Rabbit IgG Isotype Control RecAb (CL647-98136, Clone: 240953C9) (blue). Cells were incubated with FC Receptor Block prior to staining. Cells were not fixed.