

For Research Use Only

# CoraLite® Plus 647 Anti-Human Siglec-8 Rabbit Recombinant Antibody

Catalog Number: CL647-98177



## Basic Information

Catalog Number:

CL647-98177

Size:

100 tests, 5 ul/test

Source:

Rabbit

Isotype:

IgG

GenBank Accession Number:

BC053319

GeneID (NCBI):

27181

UNIPROT ID:

Q9NYZ4

Full Name:

sialic acid binding Ig-like lectin 8

Calculated MW:

499 aa, 54 kDa

Purification Method:

Protein A purification

CloneNo.:

241275A5

Excitation/Emission maxima wavelengths:

654 nm / 674 nm

## Applications

Tested Applications:

FC

Species Specificity:

human

## Background Information

Sialic acid-binding Ig-like lectin 8 (Siglec-8), also known as SAF2, is a sialic acid-binding immunoglobulin-like lectin that belongs to the SIGLEC family of the Ig superfamily (PMID: 10856141). Siglec-8 is a single-pass transmembrane protein containing three extracellular immunoglobulin-like domains, a transmembrane region, and a cytoplasmic tail (PMID: 10625619). It is an inhibitory receptor selectively expressed on human mast cells and eosinophils, and at low levels on basophils (PMID: 10856141; 33374255). Engagement of Siglec-8 with antibody results in inhibiting IgE-mediated mast cell responses and reducing allergic inflammation (PMID: 32814824).

## Storage

Storage:

Store at 2-8°C. Avoid exposure to light. Stable for one year after shipment.

Storage Buffer:

PBS with 0.09% sodium azide and 0.5% BSA.

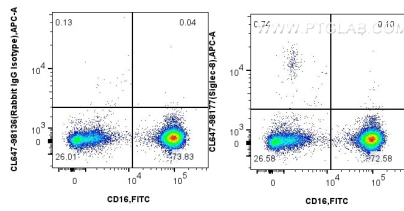
For technical support and original validation data for this product please contact:

T: 1 (888) 4PTGLAB (1-888-478-4522) (toll free in USA), or 1(312) 455-8498 (outside USA)

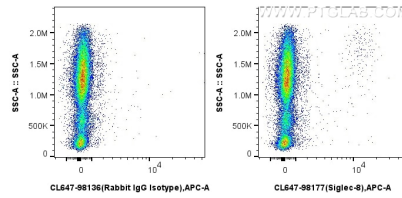
E: [proteintech@ptglab.com](mailto:proteintech@ptglab.com)  
W: [ptglab.com](http://ptglab.com)

This product is exclusively available under Proteintech Group brand and is not available to purchase from any other manufacturer.

## Selected Validation Data



1x10<sup>6</sup> human peripheral blood leukocytes were surface stained with 5 ul CoraLite® Plus 647 Anti-Human Siglec-8 Rabbit RecAb (CL647-98177, Clone: 241275A5) or CoraLite® Plus 647 Rabbit IgG Isotype Control RecAb (CL647-98136, Clone: 240953C9). Cells were co-stained with FITC Plus Anti-Human CD16 (3G8) Mouse IgG2a Recombinant Antibody (FITC-65612, Clone: 3G8). Cells were not fixed.



1x10<sup>6</sup> human peripheral blood leukocytes were surface stained with 5 ul CoraLite® Plus 647 Anti-Human Siglec-8 Rabbit RecAb (CL647-98177, Clone: 241275A5) or CoraLite® Plus 647 Rabbit IgG Isotype Control RecAb (CL647-98136, Clone: 240953C9). Cells were not fixed.