

For Research Use Only

CoraLite® Plus 647 Anti-Mouse CEACAM1/CD66a Rabbit Recombinant Antibody

Catalog Number: **CL647-98185**



Basic Information

Catalog Number:

CL647-98185

Size:

100ug , 500 ug/ml

Source:

Rabbit

Isotype:

IgG

Immunogen Catalog Number:

EG1423

GenBank Accession Number:

GeneID (NCBI):

26365

UNIPROT ID:

P31809-1

Full Name:

carcinoembryonic antigen-related
cell adhesion molecule 1

Calculated MW:

57 kDa

Purification Method:

Protein A purification

CloneNo.:

241856H5

Excitation/Emission maxima
wavelengths:

654 nm / 674 nm

Applications

Tested Applications:

FC

Species Specificity:

mouse

Background Information

CEACAM1, also known as CD66a or BGP (biliary glycoprotein), is a member of the carcinoembryonic antigen (CEA) family which belongs to the immunoglobulin superfamily of cell adhesion molecules (PMID: 16919437). CEACAMs play major roles in cell-cell and cell-ECM adhesion and have been implicated in the control of cell proliferation, angiogenesis, and tissue remodeling (PMID: 23021083). CEACAM1 is a transmembrane glycoprotein that is expressed on epithelial, endothelial, and immune cells (PMID: 30314283). CEACAM1 has been demonstrated to play a role in morphogenesis, apoptosis, angiogenesis, cell proliferation, cell motility, fibrosis, and immunity (PMID: 31604530).

Storage

Storage:

Store at 2-8°C. Avoid exposure to light. Stable for one year after shipment.

Storage Buffer:

PBS with 0.09% sodium azide, pH7.3

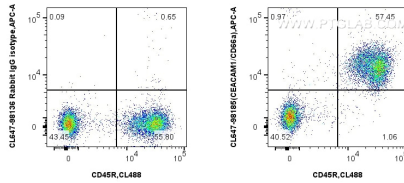
For technical support and original validation data for this product please contact:

T: 1 (888) 4PTGLAB (1-888-478-4522) (toll free
in USA), or 1(312) 455-8498 (outside USA)

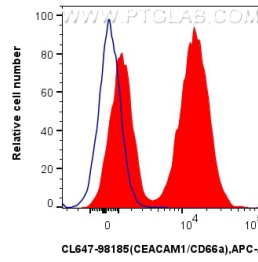
E: proteintech@ptglab.com
W: ptglab.com

This product is exclusively available under Proteintech Group brand and is not available to purchase from any other manufacturer.

Selected Validation Data



1x10⁶ mouse splenocytes were surface stained with CoraLite® Plus 488 Anti-Mouse CD45R (B220) (RA3-6B2) (CL488-65139, Clone: RA3-6B2) and 0.25 ug CoraLite® Plus 647 Anti-Mouse CEACAM1/CD66a Rabbit RecAb (CL647-98185, Clone: 241856H5) or CoraLite® Plus 647 Rabbit IgG Isotype Control RecAb (CL647-98136, Clone: 240953C9). Cells were incubated with FC Receptor Block prior to staining. Cells were not fixed.



1x10⁶ mouse splenocytes were surface stained with 0.25 ug CoraLite® Plus 647 Anti-Mouse CEACAM1/CD66a Rabbit RecAb (CL647-98185, Clone: 241856H5) (red) or CoraLite® Plus 647 Rabbit IgG Isotype Control RecAb (CL647-98136, Clone: 240953C9) (blue). Cells were incubated with FC Receptor Block prior to staining. Cells were not fixed.