

For Research Use Only

CoraLite® Plus 647 Anti-Human DDR1/CD167a Rabbit Recombinant Antibody

Catalog Number: **CL647-98200**



Basic Information

Catalog Number:

CL647-98200

Size:

100tests , 5 ul/test

Source:

Rabbit

Isotype:

IgG

Immunogen Catalog Number:

EG1675

GenBank Accession Number:

NM_001297654.2

GeneID (NCBI):

780

UNIPROT ID:

Q08345-1

Full Name:

discoidin domain receptor tyrosine
kinase 1

Calculated MW:

101kDa

Purification Method:

Protein A purification

CloneNo.:

241796D6

Excitation/Emission maxima
wavelengths:

654 nm / 674 nm

Applications

Tested Applications:

FC

Species Specificity:

human

Background Information

DDR1, or CD167a, is a member of the receptor tyrosine kinase (RTK) family, which plays a significant role in various cellular processes including cell proliferation, adhesion, migration, and extracellular matrix (ECM) remodeling. DDR1 is known for its unique discoidin domain that allows it to bind specifically to certain collagens, initiating downstream signaling pathways that can lead to cell transformation and tumor progression. Abnormal activation of DDR1 is closely associated with the development of various solid tumors, and it has been shown that DDR1 can prevent immune cells from infiltrating triple-negative breast cancer (TNBC) and eliminate tumor cells.

Storage

Storage:

Store at 2-8°C. Avoid exposure to light. Stable for one year after shipment.

Storage Buffer:

PBS with 0.09% sodium azide and 0.5% BSA, pH7.3

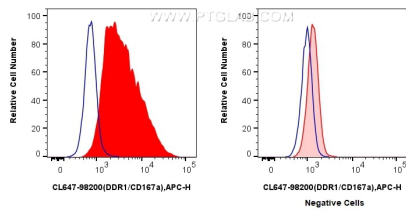
For technical support and original validation data for this product please contact:

T: 1 (888) 4PTGLAB (1-888-478-4522) (toll free
in USA), or 1(312) 455-8498 (outside USA)

E: proteintech@ptglab.com
W: ptglab.com

This product is exclusively available under Proteintech Group brand and is not available to purchase from any other manufacturer.

Selected Validation Data



1x10⁶ MCF-7 cells (left) or HeLa cells (right) were surface stained with 5 μ l CoraLite® Plus 647 Anti-Human DDR1/CD167a Rabbit RecAb (CL647-98200, Clone: 241796D6) (red) or CoraLite® Plus 647 Rabbit IgG Isotype Control RecAb (CL647-98136, Clone: 240953C9) (blue). Cells were not fixed.