

For Research Use Only

CoraLite® Plus 647 Anti-Human DC-SIGNR/CD299 Rabbit Recombinant Antibody

Catalog Number: CL647-98205



Basic Information

Catalog Number: CL647-98205	GenBank Accession Number: BC038851	Purification Method: Protein A purification
Size: 100tests , 5 ul/test	GeneID (NCBI): 10332	CloneNo.: 241683G8
Source: Rabbit	UNIPROT ID: Q9H2X3	Recommended Dilutions: FC: 5 ul per 10 ⁶ cells in a 100 µl suspension
Isotype: IgG	Full Name: C-type lectin domain family 4, member M	Excitation/Emission maxima wavelengths: 654 nm / 674 nm
	Calculated MW: 45 kDa	

Applications

Tested Applications: FC	Positive Controls: FC : Transfected HEK-293T cells,
Species Specificity: human	

Background Information

Dendritic cell-specific intracellular adhesion molecule-3-grabbing non-integrin (DC-SIGN/CD209) and DC-SIGN related (DC-SIGNR/CD299/L-SIGN/CD209L/CLEC4M) are trans-membrane C-type lectins that are calcium-dependent carbohydrate-binding proteins, which can act as cell-adhesion and pathogen-recognition receptors (PMID: 18458800). DC-SIGN and DC-SIGNR share 77% amino acid identity (PMID: 10975799; 11226297). DC-SIGN is expressed on subsets of dendritic cells and macrophages while DC-SIGNR is restricted to endothelial cells of the liver, lymph nodes and placenta (PMID: 17509452). DC-SIGNR serves as a receptor for ICAM-3. It recognizes a wide range of evolutionarily divergent pathogens.

Storage

Storage:
Store at 2-8°C. Avoid exposure to light. Stable for one year after shipment.
Storage Buffer:
PBS with 0.09% sodium azide and 0.5% BSA, pH7.3

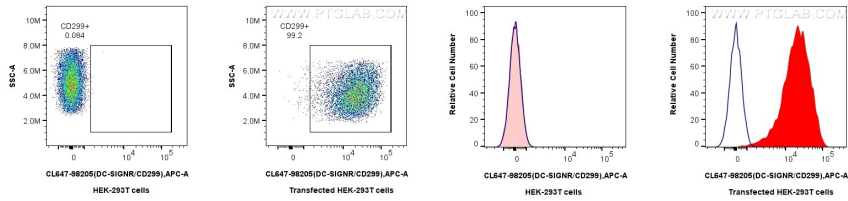
For technical support and original validation data for this product please contact:

T: 1 (888) 4PTGLAB (1-888-478-4522) (toll free in USA), or 1(312) 455-8498 (outside USA)

E: proteintech@ptglab.com
W: ptglab.com

This product is exclusively available under Proteintech Group brand and is not available to purchase from any other manufacturer.

Selected Validation Data



1x10⁶ HEK-293T cells or DC-SIGNR/CD299 transfected HEK-293T cells were surface stained with 5 ul CoraLite® Plus 647 Anti-Human DC-SIGNR/CD299 Rabbit RecAb (CL647-98205, Clone:241683G8). Cells were not fixed.

1x10⁶ HEK-293T cells or DC-SIGNR/CD299 transfected HEK-293T cells were surface stained with 5 ul CoraLite® Plus 647 Anti-Human DC-SIGNR/CD299 Rabbit RecAb (CL647-98205, Clone:241683G8)(red) or CoraLite® Plus 647 Rabbit IgG Isotype Control Recombinant Antibody (CL647-98136, Clone: 240953C9)(blue). Cells were not fixed.