

For Research Use Only

CoraLite® Plus 647 Anti-Mouse CD157 Rabbit Recombinant Antibody

Catalog Number: CL647-98213



Basic Information

Catalog Number:	GenBank Accession Number:	Purification Method:
CL647-98213	GeneID (NCBI):	Protein A purification
Size:	12182	CloneNo.:
100ug, 500 ug/ml	UNIPROT ID:	241822H1
Source:	Q64277	Excitation/Emission maxima
Rabbit	Full Name:	wavelengths:
Isotype:	bone marrow stromal cell antigen 1	654 nm / 674 nm
IgG	Calculated MW:	
Immunogen Catalog Number:	35kDa	
EG1528		

Applications

Tested Applications:
FC
Species Specificity:
mouse

Background Information

CD157, also known as bone marrow stromal cell antigen 1 (BST-1), or ADP-ribosyl cyclase 2, is a glycosyl phosphatidylinositol-anchored protein that stimulates pre-B-cell growth and has adenosine diphosphate (ADP)-ribosyl cyclase and cyclic ADP-ribose (cADPR) hydrolase activity (PMID: 9473467, 11866528). The two enzymatic activities are responsible for the synthesis and hydrolysis of cADPR, a novel second messenger of calcium release from intracellular calcium stores.

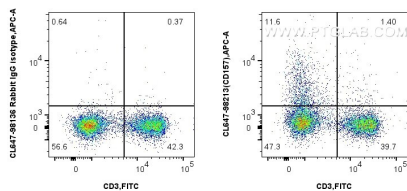
Storage

Storage:
Store at 2-8°C. Avoid exposure to light. Stable for one year after shipment.
Storage Buffer:
PBS with 0.09% sodium azide, pH7.3

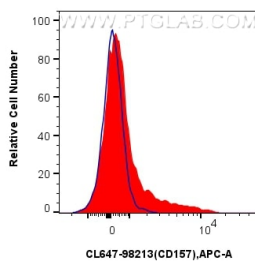
For technical support and original validation data for this product please contact:
T: 1 (888) 4PTGLAB (1-888-478-4522) (toll free in USA), or 1(312) 455-8498 (outside USA)
E: proteintech@ptglab.com
W: ptglab.com

This product is exclusively available under Proteintech Group brand and is not available to purchase from any other manufacturer.

Selected Validation Data



1x10⁶ mouse splenocytes were surface stained with FITC Plus Anti-Mouse CD3, and 0.25 ug CoraLite® Plus 647 Anti-Mouse CD157 Rabbit RecAb (CL647-98213, Clone: 241822H1) or 0.25 ug CoraLite® Plus 647 Rabbit IgG Isotype Control RecAb (CL647-98136, Clone: 240953C9). Cells were not fixed.



1x10⁶ mouse splenocytes were surface stained with 0.25 ug CoraLite® Plus 647 Anti-Mouse CD157 Rabbit RecAb (CL647-98213, Clone:241822H1)(red) or 0.25 ug CoraLite® Plus 647 Rabbit IgG Isotype Control RecAb (CL647-98136, Clone: 240953C9) (blue). Cells were not fixed.