

For Research Use Only

# CoraLite® Plus 647 Anti-Mouse Tie-2/CD202b Rabbit Recombinant Antibody

Catalog Number: CL647-98219



## Basic Information

Catalog Number:

CL647-98219

Size:

100ug , 500 ug/ml

Source:

Rabbit

Isotype:

IgG

GenBank Accession Number:

NM\_001290549.1

GeneID (NCBI):

21687

UNIPROT ID:

Q02858

Full Name:

endothelial-specific receptor tyrosine kinase

Calculated MW:

126kDa

Purification Method:

Protein A purification

CloneNo.:

241753F12

Excitation/Emission maxima wavelengths:

654 nm / 674 nm

## Applications

Tested Applications:

FC

Species Specificity:

mouse

## Background Information

Tie-2, also known as CD202b or TEK, is a receptor tyrosine kinase (RTK) specifically expressed in endothelial cells. It plays a crucial role in angiogenesis, forming new blood vessels, and maintaining vascular stability. Tie-2 is a member of the Tie receptor family, characterized by the presence of immunoglobulin and epidermal growth factor (EGF) homology domains. Tie-2 plays a significant role in several vascular diseases, including vascular malformations like venous malformations. It is also implicated in pathological vascular remodeling associated with tumor growth, where it is often overexpressed in tumor vessels.

## Storage

Storage:

Store at 2-8°C. Avoid exposure to light. Stable for one year after shipment.

Storage Buffer:

PBS with 0.09% sodium azide.

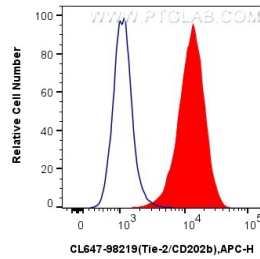
For technical support and original validation data for this product please contact:

T: 1 (888) 4PTGLAB (1-888-478-4522) (toll free in USA), or 1(312) 455-8498 (outside USA)

E: [proteintech@ptglab.com](mailto:proteintech@ptglab.com)  
W: [ptglab.com](http://ptglab.com)

This product is exclusively available under Proteintech Group brand and is not available to purchase from any other manufacturer.

## Selected Validation Data



$1 \times 10^6$  bEnd.3 cells were surface stained with 0.25  $\mu$ g CoraLite® Plus 647 Anti-Mouse Tie-2/CD202b Rabbit RecAb (CL647-98219, Clone: 241753F12) (red), or 0.25  $\mu$ g CoraLite® Plus 647 Rabbit IgG Isotype Control RecAb (CL647-98136, Clone: 240953C9) (blue). Cells were not fixed.