

For Research Use Only

# CoraLite® Plus 647 Anti-Human CD300e Rabbit Recombinant Antibody

Catalog Number: CL647-98235



## Basic Information

<b>Catalog Number:</b> CL647-98235	<b>GenBank Accession Number:</b> NM_181449.2	<b>Purification Method:</b> Protein A purification
<b>Size:</b> 100tests , 5 ul/test	<b>GeneID (NCBI):</b> 342510	<b>CloneNo.:</b> 242031C10
<b>Source:</b> Rabbit	<b>UNIPROT ID:</b> Q496F6	<b>Excitation/Emission maxima wavelengths:</b> 654 nm / 674 nm
<b>Isotype:</b> IgG	<b>Full Name:</b> CD300e molecule	
<b>Immunogen Catalog Number:</b> EG2638	<b>Calculated MW:</b> 23 kDa	

## Applications

**Tested Applications:**  
FC

**Species Specificity:**  
human

## Background Information

CD300e, also known as immune receptor expressed on myeloid cells 2 (IREM-2), CLM-2, or CMRF35-A5, is one of the CD300 family members which belong to the immunoglobulin (Ig) superfamily (PMID: 15557162; 20039296). CD300e is a type I transmembrane glycoprotein that contains an extracellular region comprising an Ig-like domain, a transmembrane region, and a short cytoplasmic tail (PMID: 15557162; 29358324). It is by monocytes and myeloid dendritic cells and transmits an immune-activating signal by interacting with DNAX-activating protein 12 (DAP12) (PMID: 29358324).

## Storage

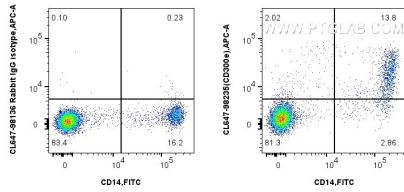
**Storage:**  
Store at 2-8°C. Avoid exposure to light. Stable for one year after shipment.

**Storage Buffer:**  
PBS with 0.09% sodium azide and 0.5% BSA, pH7.3

For technical support and original validation data for this product please contact:  
T: 1 (888) 4PTGLAB (1-888-478-4522) (toll free in USA), or 1(312) 455-8498 (outside USA)  
E: [proteintech@ptglab.com](mailto:proteintech@ptglab.com)  
W: [ptglab.com](http://ptglab.com)

This product is exclusively available under Proteintech Group brand and is not available to purchase from any other manufacturer.

## Selected Validation Data



1x10<sup>6</sup> human PBMCs were surface stained with FITC Plus Anti-Human CD14 Rabbit Recombinant Antibody (FITC-98040, Clone: 230332D7), and 0.25 ug CoraLite® Plus 647 Anti-Human CD300e Rabbit RecAb (CL647-98235, Clone: 242031C10) or 0.25 ug CoraLite® Plus 647 Rabbit IgG Isotype Control RecAb (CL647-98136, Clone: 240953C9). Cells were not fixed.