

For Research Use Only

# CoraLite® Plus 647 Anti-Human CD68 Rabbit Recombinant Antibody

Catalog Number: CL647-98242



## Basic Information

Catalog Number:

CL647-98242

Size:

100 tests, 5 ul/test

Source:

Rabbit

Isotype:

IgG

GenBank Accession Number:

BC015557

GeneID (NCBI):

968

UNIPROT ID:

P34810

Full Name:

CD68 molecule

Calculated MW:

37 kDa

Purification Method:

Protein A purification

CloneNo.:

241810G1

Excitation/Emission maxima wavelengths:

654 nm / 674 nm

## Applications

Tested Applications:

FC (Intra)

Species Specificity:

human

## Background Information

CD68 is a type I transmembrane glycoprotein that is highly expressed by human monocytes and tissue macrophages. It belongs to the lysosomal/endosomal-associated membrane glycoprotein (LAMP) family and primarily localizes to lysosomes and endosomes with a smaller fraction circulating to the cell surface. CD68 is also a member of the scavenger receptor family. It may play a role in phagocytic activities of tissue macrophages.

## Storage

Storage:

Store at 2-8°C. Avoid exposure to light. Stable for one year after shipment.

Storage Buffer:

PBS with 0.09% sodium azide and 0.5% BSA.

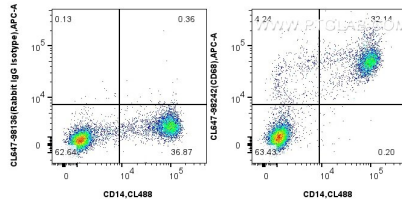
For technical support and original validation data for this product please contact:

T: 1 (888) 4PTGLAB (1-888-478-4522) (toll free in USA), or 1(312) 455-8498 (outside USA)

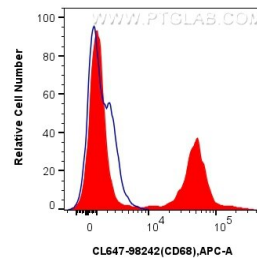
E: [proteintech@ptglab.com](mailto:proteintech@ptglab.com)  
W: [ptglab.com](http://ptglab.com)

This product is exclusively available under Proteintech Group brand and is not available to purchase from any other manufacturer.

## Selected Validation Data



1x10<sup>6</sup> FC receptor blocked human PBMCs were surface stained with CoraLite® Plus 488 Anti-Human CD14, and 5 ul CoraLite® Plus 647 Anti-Human CD68 Rabbit RecAb (CL647-98242, Clone:241810G1) or CoraLite® Plus 647 Rabbit IgG Isotype Control RecAb (CL647-98136, Clone: 240953C9). Cells were incubated with FC Receptor Block prior to staining. Cells were fixed with 4% PFA and permeabilized with Flow Cytometry Perm Buffer (PF00011-C).



1x10<sup>6</sup> FC receptor blocked human PBMCs were surface stained with 5 ul CoraLite® Plus 647 Anti-Human CD68 Rabbit RecAb (CL647-98242, Clone: 241810G1) (red), or CoraLite® Plus 647 Rabbit IgG Isotype Control RecAb (CL647-98136, Clone: 240953C9) (blue). Cells were incubated with FC Receptor Block prior to staining. Cells were fixed with 4% PFA and permeabilized with Flow Cytometry Perm Buffer (PF00011-C).