

For Research Use Only

CoraLite® Plus 647 Anti-Human Jagged1/CD339 Rabbit Recombinant Antibody

Catalog Number: **CL647-98243**



Basic Information

Catalog Number:

CL647-98243

Size:

100tests , 5 ul/test

Source:

Rabbit

Isotype:

IgG

GenBank Accession Number:

BC098393

GeneID (NCBI):

182

UNIPROT ID:

P78504

Full Name:

jagged 1 (Alagille syndrome)

Calculated MW:

1218 aa, 134 kDa

Purification Method:

Protein A purification

CloneNo.:

241412A6

Excitation/Emission maxima wavelengths:

654 nm / 674 nm

Applications

Tested Applications:

FC

Species Specificity:

human

Background Information

Jagged1 (JAG1), also known as CD339, is a type I, membrane-anchored, multi-domain protein and a ligand of the Notch receptor (PMID: 15358557). Jagged1 is composed of a relatively small intracellular domain, a transmembrane domain, and a larger extracellular component containing a cysteine-rich region, 16 EGF-like repeats, a DSL domain, and a signal peptide (PMID: 15358557; 26548814). It is widely expressed throughout mammalian development, across many tissues and developmental stages (PMID: 26548814). The Jagged1-NOTCH interaction can trigger the Notch signaling and activate transcription factors that play key roles in cell differentiation and morphogenesis.

Storage

Storage:

Store at 2-8°C. Avoid exposure to light. Stable for one year after shipment.

Storage Buffer:

PBS with 0.09% sodium azide and 0.5% BSA.

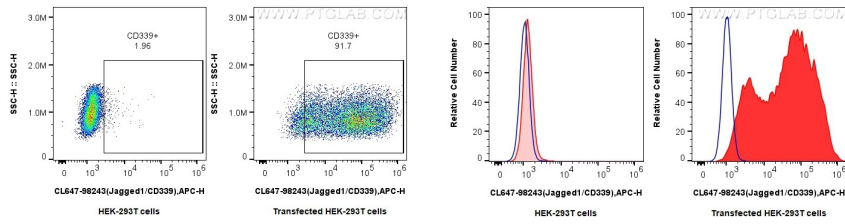
For technical support and original validation data for this product please contact:

T: 1 (888) 4PTGLAB (1-888-478-4522) (toll free in USA), or 1(312) 455-8498 (outside USA)

E: proteintech@ptglab.com
W: ptglab.com

This product is exclusively available under Proteintech Group brand and is not available to purchase from any other manufacturer.

Selected Validation Data



1x10⁶ HEK-293T cells or Jagged1/CD339 transfected HEK-293T cells were surface stained with 0.25 ug CoraLite® Plus 647 Anti-Human Jagged1/CD339 Rabbit RecAb (CL647-98243, Clone:241412A6) or 0.25 ug CoraLite® Plus 647 Rabbit IgG Isotype Control RecAb (CL647-98136, Clone: 240953C9). Cells were not fixed.

1x10⁶ HEK-293T cells or Jagged1/CD339 transfected HEK-293T cells were surface stained with 0.25 ug CoraLite® Plus 647 Anti-Human Jagged1/CD339 Rabbit RecAb (CL647-98243, Clone:241412A6) (red), or 0.25 ug CoraLite® Plus 647 Rabbit IgG Isotype Control RecAb (CL647-98136, Clone: 240953C9) (blue). Cells were not fixed.