

For Research Use Only

CoraLite® Plus 647 Anti-Mouse EPCR/CD201 Rabbit Recombinant Antibody

Catalog Number: **CL647-98248**



Basic Information

Catalog Number: CL647-98248	GenBank Accession Number: NM_011171.2	Purification Method: Protein A purification
Size: 100ug , 500 ug/ml	GeneID (NCBI): 19124	CloneNo.: 241853A7
Source: Rabbit	UNIPROT ID: Q64695	Recommended Dilutions: FC: 0.25 ug per 10 ⁶ cells in a 100 µl suspension
Isotype: IgG	Full Name: protein C receptor, endothelial	Excitation/Emission maxima wavelengths: 654 nm / 674 nm
Immunogen Catalog Number: EG1517	Calculated MW: 27kDa	

Applications

Tested Applications: FC	Positive Controls: FC : bEnd.3 cells,
Species Specificity: mouse	

Background Information

EPCR, also known as CD201, protein C receptor (PROCR), or activated protein C receptor (APC receptor), is a transmembrane glycoprotein. EPCR promotes the activation of protein C, which has anticoagulant and cytoprotective effects. EPCR facilitates the activation of protein C by the thrombin-thrombomodulin complex but also facilitates APC-mediated cytoprotective effects on cells that involve the activation of protease-activated receptors (PAR) 1 and 3(PMID: 27207424).

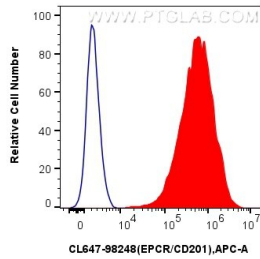
Storage

Storage:
Store at 2-8°C. Avoid exposure to light. Stable for one year after shipment.
Storage Buffer:
PBS with 0.09% sodium azide, pH7.3

For technical support and original validation data for this product please contact:
T: 1 (888) 4PTGLAB (1-888-478-4522) (toll free in USA), or 1(312) 455-8498 (outside USA) E: proteintech@ptglab.com
W: ptglab.com

This product is exclusively available under Proteintech Group brand and is not available to purchase from any other manufacturer.

Selected Validation Data



1x10⁶ bEnd.3 cells were surface stained with 0.25 ug CoraLite® Plus 647 Anti-Mouse EPCR/CD201 Rabbit RecAb (CL647-98248, Clone: 241853A7)(red) or 0.25 ug CoraLite® Plus 647 Rabbit IgG Isotype Control RecAb (CL647-98136, Clone: 240953C9) (blue). Cells were not fixed.