

For Research Use Only

CoraLite® Plus 647 Anti-Human CD300a Rabbit Recombinant Antibody

Catalog Number: CL647-98268



Basic Information

Catalog Number:

CL647-98268

Size:

100 tests, 5 ul/test

Source:

Rabbit

Isotype:

IgG

GenBank Accession Number:

NM_007261.4

GeneID (NCBI):

11314

UNIPROT ID:

Q9UGN4-1

Full Name:

CD300a molecule

Calculated MW:

33 kDa

Purification Method:

Protein A purification

CloneNo.:

242131H4

Excitation/Emission maxima wavelengths:

654 nm / 674 nm

Applications

Tested Applications:

FC

Species Specificity:

human

Background Information

Human CD300a is a transmembrane protein, with an immunoglobulin (Ig)V-like extracellular domain and a cytoplasmic tail containing immunoreceptor tyrosine-based inhibitory motifs (ITIMs), providing the receptor with an inhibitory capacity. The relevance of the CD300a molecule in several pathological conditions has been highlighted by multiple studies. (PMID: 37762055)

Storage

Storage:

Store at 2-8°C. Avoid exposure to light. Stable for one year after shipment.

Storage Buffer:

PBS with 0.09% sodium azide and 0.5% BSA

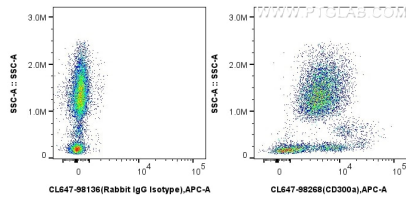
For technical support and original validation data for this product please contact:

T: 1 (888) 4PTGLAB (1-888-478-4522) (toll free in USA), or 1(312) 455-8498 (outside USA)

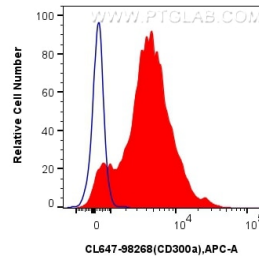
E: proteintech@ptglab.com
W: ptglab.com

This product is exclusively available under Proteintech Group brand and is not available to purchase from any other manufacturer.

Selected Validation Data



1x10⁶ FC receptor blocked human peripheral blood leukocytes were surface stained with 5 ul CoraLite® Plus 647 Anti-Human CD300a Rabbit RecAb (CL647-98268, Clone: 242131H4) (red) or 5 ul CoraLite® Plus 647 Rabbit IgG Isotype Control RecAb (CL647-98136, Clone: 240953C9) (blue). Cells were not fixed.



1x10⁶ FC receptor blocked human peripheral blood leukocytes were surface stained with 5 ul CoraLite® Plus 647 Anti-Human CD300a Rabbit RecAb (CL647-98268, Clone: 242131H4) (red) or 5 ul CoraLite® Plus 647 Rabbit IgG Isotype Control RecAb (CL647-98136, Clone: 240953C9) (blue). Cells were not fixed.