

For Research Use Only

# CoraLite® Plus 647 Anti-Mouse CD25/IL-2RA Rabbit Recombinant Antibody

Catalog Number: **CL647-98288**



## Basic Information

<b>Catalog Number:</b> CL647-98288	<b>GenBank Accession Number:</b> NM_008367.3	<b>Purification Method:</b> Protein A purification
<b>Size:</b> 100ug , 500 ug/ml	<b>GeneID (NCBI):</b> 16184	<b>CloneNo.:</b> 242494H5
<b>Source:</b> Rabbit	<b>UNIPROT ID:</b> P01590	<b>Recommended Dilutions:</b> FC: 0.25 ug per 10 <sup>6</sup> cells in a 100 µl suspension
<b>Isotype:</b> IgG	<b>Full Name:</b> interleukin 2 receptor, alpha chain	<b>Excitation/Emission maxima wavelengths:</b> 654 nm / 674 nm
<b>Immunogen Catalog Number:</b> EG3087	<b>Calculated MW:</b> 31 kDa	

## Applications

<b>Tested Applications:</b> FC	<b>Positive Controls:</b> FC : Anti-CD3/CD28 treated mouse splenocytes,
<b>Species Specificity:</b> mouse	

## Background Information

Proliferation of T lymphocytes is triggered by the interaction of IL-2 with its specific receptor following T lymphocyte activation. The receptor for IL-2 has three forms, generated by different combinations of three different proteins, the alpha chain (IL-2R alpha), the beta chain (IL-2R beta), and the gamma chain (IL-2R gamma) (PMID: 8476561). IL-2R alpha (also known as CD25) is a type I transmembrane protein present on activated T cells, activated B cells, some thymocytes, myeloid precursors, and oligodendrocytes. CD25 is also found on natural CD4<sup>+</sup>Foxp3<sup>+</sup> Treg cells and a subset of human CD4<sup>+</sup> memory T cells (PMID: 22585674).

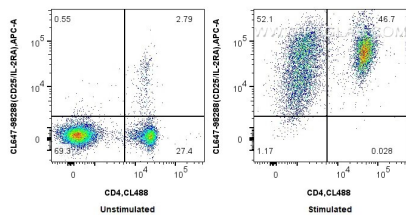
## Storage

**Storage:**  
Store at 2-8°C. Avoid exposure to light. Stable for one year after shipment.  
**Storage Buffer:**  
PBS with 0.09% sodium azide, pH7.3

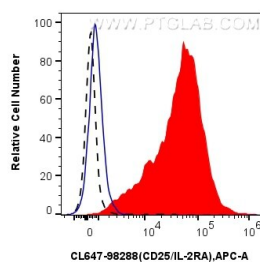
For technical support and original validation data for this product please contact:  
T: 1 (888) 4PTGLAB (1-888-478-4522) (toll free in USA), or 1(312) 455-8498 (outside USA)  
E: [proteintech@ptglab.com](mailto:proteintech@ptglab.com)  
W: [ptglab.com](http://ptglab.com)

This product is exclusively available under Proteintech Group brand and is not available to purchase from any other manufacturer.

## Selected Validation Data



1x10<sup>6</sup> untreated or anti-CD3/CD28 treated mouse splenocytes were stained with CoraLite® Plus 488 Anti-Mouse CD4 and 0.25 ug CoraLite® Plus 647 Anti-Mouse CD25/IL-2RA Rabbit RecAb (CL647-98288, Clone: 242494H5). Cells were not fixed.



1x10<sup>6</sup> anti-CD3/CD28 treated mouse splenocytes were stained with 0.25 ug CoraLite® Plus 647 Anti-Mouse CD25/IL-2RA Rabbit RecAb (CL647-98288, Clone: 242494H5) (red) or CoraLite® Plus 647 Rabbit IgG Isotype Control RecAb (CL647-98136, Clone: 240953C9) (blue). 1x10<sup>6</sup> untreated mouse splenocytes were stained with 0.25 ug CoraLite® Plus 647 Anti-Mouse CD25/IL-2RA Rabbit RecAb (CL647-98288, Clone: 242494H5) (black, dashed). Cells

