

For Research Use Only

CoraLite® Plus 647 Anti-Mouse FcεR1a Rabbit Recombinant Antibody

Catalog Number:CL647-98289



Basic Information

Catalog Number:

CL647-98289

Size:

100ug , 500 ug/ml

Source:

Rabbit

Isotype:

IgG

Immunogen Catalog Number:

EG1740

GenBank Accession Number:

NM_010184.2

GeneID (NCBI):

14125

UNIPROT ID:

P20489

Full Name:

Fc receptor, IgE, high affinity I, alpha polypeptide

Calculated MW:

29 kDa

Purification Method:

Protein A purification

CloneNo.:

242008G6

Recommended Dilutions:

FC: 0.25 ug per 10⁶ cells in a 100 μl suspension

Excitation/Emission maxima wavelengths:

654 nm / 674 nm

Applications

Tested Applications:

FC

Species Specificity:

mouse

Positive Controls:

FC : MC/9 cells,

Background Information

Fc epsilon Receptor I alpha (FcεR1a) is a single-pass type I membrane protein that contains 2 immunoglobulin-like domains. FcεR1a forms a tetrameric complex, FcεRI, with one beta and two gamma subunits (PMID: 19406478). FcεRI is the high-affinity receptor for the Fc region of immunoglobulin E (IgE) (PMID: 1532373). It is expressed on mast cells and basophils and plays a central role in the allergic response (PMID: 2148316).

Storage

Storage:

Store at 2-8°C. Avoid exposure to light. Stable for one year after shipment.

Storage Buffer:

PBS with 0.09% sodium azide, pH7.3

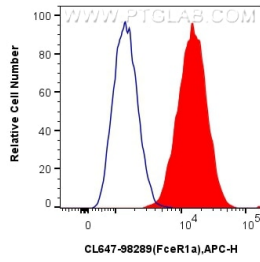
For technical support and original validation data for this product please contact:

T: 1 (888) 4PTGLAB (1-888-478-4522) (toll free in USA), or 1(312) 455-8498 (outside USA)

E: proteintech@ptglab.com
W: ptglab.com

This product is exclusively available under Proteintech Group brand and is not available to purchase from any other manufacturer.

Selected Validation Data



1x10⁶ MC/9 cells were surface stained with 0.25 ug CoraLite® Plus 647 Anti-Mouse FcεR1a Rabbit RecAb (CL647-98289, Clone: 242008G6) (red) or CoraLite® Plus 647 Rabbit IgG Isotype Control RecAb (CL647-98136, Clone: 240953C9) (blue). Cells were not fixed.