

For Research Use Only

# CoraLite® Plus 647 Anti-Human IL-10RB Rabbit Recombinant Antibody

Catalog Number: CL647-98292



## Basic Information

### Catalog Number:

CL647-98292

### Size:

100 tests, 5 µl/test

### Source:

Rabbit

### Isotype:

IgG

### Immunogen Catalog Number:

EG3446

### GenBank Accession Number:

BC001903

### GeneID (NCBI):

3588

### UNIPROT ID:

Q08334

### Full Name:

interleukin 10 receptor, beta

### Calculated MW:

37 kDa

### Purification Method:

Protein A purification

### CloneNo.:

242302D2

### Recommended Dilutions:

FC: 5 µl per 10<sup>6</sup> cells in a 100 µl suspension

### Excitation/Emission maxima wavelengths:

654 nm / 674 nm

## Applications

### Tested Applications:

FC

### Species Specificity:

human

### Positive Controls:

FC : human PBMCs,

## Background Information

Interleukin-10 (IL-10) is an anti-inflammatory cytokine that plays a critical role in maintaining immune system balance. IL-10 signals through a receptor complex consisting of two molecules of the IL-10R alpha-chain (IL-10RA) and two molecules of the accessory IL-10R beta-chain (IL-10RB) (PMID: 22236434). IL-10RA and IL-10RB are members of the type II cytokine receptor family. IL-10RB, also known as IL-10R2 or CDw210b, is the signaling subunit of the IL-10R complex and is constitutively expressed in a variety of cell types (PMID: 24507158). Binding of IL-10 to the IL-10R complex leads to JAK1- and TYK2-mediated phosphorylation of STAT3 (PMID: 11244051; 10433356). IL-10RB is also shared by several other cytokines, including IL22, IL-26, IFN-γ, IL-28A/B and IL29 (PMID: 22236434).

## Storage

### Storage:

Store at 2-8°C. Avoid exposure to light. Stable for one year after shipment.

### Storage Buffer:

PBS with 0.09% sodium azide and 0.5% BSA, pH7.3

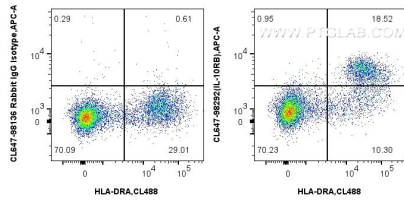
For technical support and original validation data for this product please contact:

T: 1 (888) 4PTGLAB (1-888-478-4522) (toll free in USA), or 1(312) 455-8498 (outside USA)

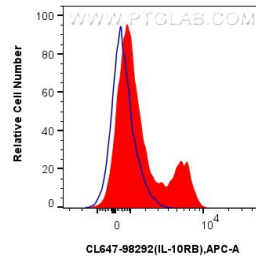
E: [proteintech@ptglab.com](mailto:proteintech@ptglab.com)  
W: [ptglab.com](http://ptglab.com)

This product is exclusively available under Proteintech Group brand and is not available to purchase from any other manufacturer.

## Selected Validation Data



1x10<sup>6</sup> human PBMCs were surface stained with CoraLite® Plus 488 Anti-Human HLA-DR (L243) Mouse IgG2a Recombinant Antibody (CL488-65560, Clone: L243), and 5 ul CoraLite® Plus 647 Anti-Human IL-10RB Rabbit RecAb (CL647-98292, Clone: 242302D2) or CoraLite® Plus 647 Rabbit IgG Isotype Control RecAb (CL647-98136, Clone: 240953C9). Cells were incubated with FC Receptor Block prior to staining. Cells were not fixed.



1x10<sup>6</sup> human PBMCs were surface stained with 5 ul CoraLite® Plus 647 Anti-Human IL-10RB Rabbit RecAb (CL647-98292, Clone:242302D2) (red) or CoraLite® Plus 647 Rabbit IgG Isotype Control RecAb (CL647-98136, Clone: 240953C9) (blue). Cells were incubated with FC Receptor Block prior to staining. Cells were not fixed.