

For Research Use Only



CoraLite® Plus 647 Anti-Human CDCP1/CD318 Rabbit Recombinant Antibody

Catalog Number: **CL647-98294**

Basic Information

Catalog Number:

CL647-98294

Size:

100tests , 5 ul/test

Source:

Rabbit

Isotype:

IgG

Immunogen Catalog Number:

EG2574

GenBank Accession Number:

BC153169

GeneID (NCBI):

64866

UNIPROT ID:

Q9H5V8

Full Name:

CUB domain containing protein 1

Purification Method:

Protein A purification

CloneNo.:

242428F9

Recommended Dilutions:

FC: 5 ul per 10⁶ cells in a 100 µl suspension

Excitation/Emission maxima wavelengths:

654 nm / 674 nm

Applications

Tested Applications:

FC

Species Specificity:

human

Positive Controls:

FC : HT-29 cells,

Background Information

CDCP1, also called CD318, TRASK, and SIMA 135, is a 135-140 kDa transmembrane protein containing three CUB domains within the extracellular region and a hexalysine stretch within the cytoplasmic region. A soluble form with MW 80 kDa (p80) is cleaved at an unidentified site on the N-terminal side. CDCP1 is a novel marker for hematopoietic stem cells.

Storage

Storage:

Store at 2-8°C. Avoid exposure to light. Stable for one year after shipment.

Storage Buffer:

PBS with 0.09% sodium azide and 0.5% BSA, pH7.3

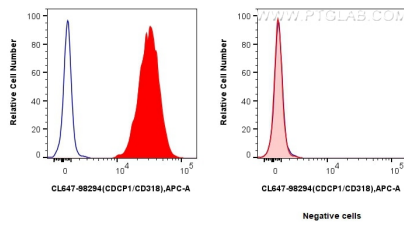
For technical support and original validation data for this product please contact:

T: 1 (888) 4PTGLAB (1-888-478-4522) (toll free in USA), or 1(312) 455-8498 (outside USA)

E: proteintech@ptglab.com
W: ptglab.com

This product is exclusively available under Proteintech Group brand and is not available to purchase from any other manufacturer.

Selected Validation Data



1x10⁶ HT-29 cells (left) or MCF-7 cells (right) were surface stained with 5 μ l CoraLite® Plus 647 Anti-Human CDCP1/CD318 Rabbit RecAb (CL647-98294, Clone: 242428F9) (red) or CoraLite® Plus 647 Rabbit IgG Isotype Control RecAb (CL647-98136, Clone: 240953C9) (blue). Cells were not fixed.