

For Research Use Only

CoraLite® Plus 647 Anti-Human TGFBR2 Rabbit Recombinant Antibody

Catalog Number:CL647-98438



Basic Information

Catalog Number:

CL647-98438

Size:

100tests , 5 ul / test

Source:

Rabbit

Isotype:

IgG

Immunogen Catalog Number:

EG2943

GenBank Accession Number:

NM_003242.5

GeneID (NCBI):

7048

UNIPROT ID:

P37173-1

Full Name:

transforming growth factor, beta receptor II (70/80kDa)

Calculated MW:

65 kDa

Purification Method:

Protein A purification

CloneNo.:

250238A7

Recommended Dilutions:

FC: 5 ul per 10⁶ cells in a 100 µl suspension

Excitation/Emission maxima wavelengths:

654 nm / 674 nm

Applications

Tested Applications:

FC

Species Specificity:

human

Positive Controls:

FC : human PBMCs,

Background Information

TGF beta Receptor II (TGFBR2) is a member of the transforming growth factor- β (TGF- β) superfamily, which are critical regulators of cell proliferation and differentiation, developmental patterning and morphogenesis, and disease pathogenesis (PMID: 10974075). TGFBR2 is a serine/threonine kinase and the primary ligand-binding receptor. After binding of the ligand TGF- β 1, TGFBR2 forms a heterodimer complex with TGFBR1, causing conformational changes and signal propagation via canonical (SMAD-dependent) and non-canonical (SMAD-independent) routes. Upon translocation into the nucleus, activated SMAD complexes can interact with various transcription factors to control target gene expression (PMID: 31454892).

Storage

Storage:

Store at 2-8°C. Avoid exposure to light. Stable for one year after shipment.

Storage Buffer:

PBS with 0.09% sodium azide and 0.5% BSA, pH7.3

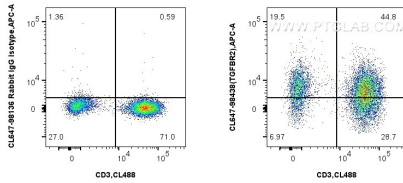
For technical support and original validation data for this product please contact:

T: 1 (888) 4PTGLAB (1-888-478-4522) (toll free in USA), or 1(312) 455-8498 (outside USA)

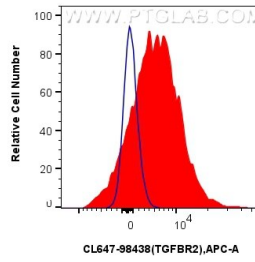
E: proteintech@ptglab.com
W: ptglab.com

This product is exclusively available under Proteintech Group brand and is not available to purchase from any other manufacturer.

Selected Validation Data



1x10⁶ human PBMCs were surface stained with CoraLite® Plus 488 Anti-Human CD3, and 5 ul CoraLite® Plus 647 Anti-Human TGFBR2 Rabbit RecAb (CL647-98438, Clone: 250238A7) or CoraLite® Plus 647 Rabbit IgG Isotype Control Recombinant Antibody (CL647-98136, Clone: 240953C9). Cells were not fixed. Lymphocytes were gated.



1x10⁶ human PBMCs were surface stained with 5 ul CoraLite® Plus 647 Anti-Human TGFBR2 Rabbit RecAb (CL647-98438, Clone: 250238A7) (red) or CoraLite® Plus 647 Rabbit IgG Isotype Control Recombinant Antibody (CL647-98136, Clone: 240953C9) (blue). Cells were not fixed. Lymphocytes were gated.